

HISTORY OF THE SCHOOLS  
in the  
GASTINEAU CHANNEL AREA  
June 1973

MANUSCRIPT  
#

Box 4/2

x 4/2

ALASKA HISTORICAL LIBRARY



HISTORY OF THE SCHOOLS  
in the  
GASTINEAU CHANNEL AREA  
June 1973

JUNEAU--SCHOOLS

MANUSCRIPT Tillotson, Marjorie

4 History of the schools in the Gastineau  
Box #4/2 Channel Area. [Juneau, Alaska, 1973]  
97 photos 28 cm.

Includes list of teachers in Juneau schools  
1885-1945 as taken from the newspapers;  
Douglas teachers and enrollments 1887-1902;  
teachers and enrollment for Juneau Seventh  
Day Adventist School 1959-1973.

Photos of schools and information on school  
events is also included.

1. Juneau-- Schools. 2. Douglas--  
Schools. 3. Schools--Teachers. I. Tit

See

L  
119  
J9  
T46  
1990

L  
119  
.J9  
T46  
1990



Phyllis Nottingham  
A gift to the State  
Hist. Library from  
Sam MacKinnon &  
Majorie Tillotson.  
I hope this pulls  
together various subjects  
& makes them easier  
to find. Marge

7/1/73



FOREWORD

HISTORY OF THE SCHOOLS IN THE GASTINEAU CHANNEL AREA

In the summer of 1972 a mystery that had been plaguing the librarian of the Alaska State Historical Library and the staff of the Superintendent's office of the Greater Juneau Borough Schools was solved. An unpublished HISTORY OF THE JUNEAU PUBLIC SCHOOLS written by former Superintendent A. B. Phillips came to light when his widow, Myrtle, herself a former local teacher, mailed the manuscript to Sim and Hazel MacKinnon. Since the MacKinnon's are local history buffs with an extensive collection of rare books and undoubtedly one of the finest aggregations of early day photography in the area, Mrs. Phillips couldn't have made a better choice of recipients.

In the meantime, with the help of many this HISTORY OF THE SCHOOLS IN THE GASTINEAU CHANNEL AREA has been expanded to include all the schools, public, parochial, and private, and if any helper's name has been omitted from the acknowledgments, it has not been intentional.

It has been a fun project and the four copies will be distributed to the Alaska State Historical Library, the Superintendent's office, the Juneau Memorial Library, and the Historical Library of the University of Alaska, in the hope that at least a few will enjoy browsing through them.

*Marjorie Tillotson*  
Marjorie Tillotson

June 28, 1973



HISTORY OF THE SCHOOLS IN THE GASTINEAU CHANNEL AREA

TABLE OF CONTENTS

	Page
SECTION I Juneau City Schools 1885-1945. . . . .	1.
SECTION II Early-Day Outlying Schools. . . . .	49
SECTION III Douglas City Schools. . . . .	54
SECTION IV Church Connected Schools. . . . .	64
SECTION V Indian Schools. . . . .	76
SECTION VI Outlying Schools. . . . .	85
SECTION VII Area-wide recently constructed Schools. . . . .	89

Public Schools from 1924 to 1947, and also  
taught shop here in 1921-22.

Before the Territorial Department of  
Education began publishing a directory  
names of teachers were obtained or laboriously  
browsing through old newspapers in search  
of news stories and steamship passenger  
lists, a monumental task.

"Hobbying" is Freney's word.

And Mr. Phillips, Director Carter, L. J.  
perhaps and perhaps many others all contributed  
to SECTION I.



SECTION I  
JUNEAU CITY SCHOOLS  
1885-1945

SECTION I of JUNEAU CITY SCHOOLS 1885-1945 has largely been taken from Mr. Phillips' manuscript. He was Superintendent of Juneau Public Schools from 1934 to 1947, and also taught shop here in 1921-22.

Before the Territorial Department of Education began publishing a directory names of teachers were obtained by laboriously browsing through old newspapers in search of news stories and steamship passenger lists, a monumental task.

"Miscellany" is from many sources.

Hazel and Sim MacKinnon, Trevor Davis, K.R. Ferguson and perhaps many others all contributed to SECTION I.



Excerpts from Mr. Phillips' manuscript, The Juneau Public Schools,  
History and Statistics Concerning Them.

By 1883 little was thought and less done about education in Juneau. There were children but no schools. By the following year there was much talk about getting schools started. On May 17, 1884 the Organic Act provided for "an appropriation of \$25,000 for the education of children of school age in the Territory of Alaska without reference to race" and on the 7th of July 1884 a further appropriation of \$150,000 was made by the Congress "for support and education of Indian children of both sexes at individual schools in Alaska." In April of 1885 Sheldon Jackson was appointed "General Agent of the Territory." Among other schools established by Sheldon Jackson at this <sup>time</sup> <sup>1</sup> was one in Juneau.

First School

A log carpenter shop was rented from George F. Nowell <sup>2</sup> and renovated for a classroom. The school opened on June 1, 1885 and had Miss Marion B. Murphy of Oregon as teacher. School continued in the log cabin school for two years. At this time it was sold to Reverend J. P. White <sup>3</sup> for a Presbyterian Church. It was at this time that the familiar log bell tower was added. The structure was on the land until recently occupied by the Juneau (Zynda) Hotel at Third and Main Streets.

1. Report of the Governor of Alaska October 1, 1885.
2. J. S. MacKinnon says the log cabin carpenter shop was rented from Mr. Pryor of the Occidental Hotel. The Pryor residence was where the Juneau Memorial Library now stands.
3. Letter from acting secretary of the Interior to the Department of the Interior Document #137, 55th Congress, 2nd Session, Senate.





School - Log Cabin Church  
A-40 Juneau, 1880's 1887

Photo copied by J. S. MacKinnon

#### First School in Juneau

Miss Marion B. Murphy of Oregon was the first teacher in the Juneau Public Schools. The building was the famous log cabin carpenter shop rented for school purposes the years 1885-1887.

Note the absence of the familiar log bell tower, which was added later when the structure became a Presbyterian Church.



### Second School

After establishing the school in the "Log Cabin Carpenter Shop and Church" Wheldon Jackson was looking forward to the erection of future school houses. He selected a block of land in the center of the village (Juneau) and had a cheap fence thrown up around it in order to secure it for school purposes. This land was block 22, later the site of the old Fifth Street School Building, and still later used by the Community College until destroyed by fire in 1972. Currently the land is being used as a playfield for Capital School.

The new school was a one-story frame building with two rooms. White pupils were taught in one room and natives in the other.

It was designed by Charles E. Overend and he was paid \$15 for architectural fees. Construction costs paid to E. B. Crawford totaled \$1,132.25. In addition J. G. Brady, who operated a saw mill, was paid \$1,133.74 for material and assistance.

In addition, by 1887 the Catholic Church maintained a school of their own, which was taught by two Sisters of Charity who had a larger attendance than both public white and native schools.<sup>1</sup>

### Third School

The third was called the "little white school." This was built in 1893 on the present location of the Governor's Mansion and cost \$1300 complete without outdoor privies. It was maintained by the Federal Government for native students and was removed only in 1912 to make way for the construction of the Governor's Mansion.

### Fourth School

In 1900 two rooms were added to the school on Fifth Street, making a total of four rooms used for white children.

1. Report of the Governor of Alaska 1887





Photo copied by J. S. MacKinnon

### Second School

This was occupied in 1887, as the first of several schools to be built on the land selected by Dr. Sheldon Jackson on Fifth Street between Seward and Franklin, the location of the present playfield of Capital School.

It had two classrooms, one occupied by white and one by native pupils, and was enlarged to four and eventually to eight rooms by 1902.

The attractive building was designed by Charles E. Overend and constructed by E. B. Crawford.





Photo copied by J. S. MacKinnon

#### Fourth School

Two rooms were added to the school on Fifth Street in 1900 making a total of four used for white children.

In the summer of 1901 additional space in Heid's Hall was rented to take care of increased enrollment. This structure stood on the site of the present Shattuck Building.



also @ P20-112  
P87-912 & 913 are better



Photo copied by J. S. MacKinnon

#### Fifth School

In the summer of 1902 the roof was removed from the old original school and four rooms added, thus doubling the space to eight rooms.

By 1913 the schools were so overcrowded that the high school and grades 7-8 were moved to the second story of the City Hall.



In 1901 an additional room, Heid's Hall, was rented to take care of increased enrollment. This structure stood on the site of the present Shattuck Building.

#### Fifth School

In the summer of 1902 the roof was removed from the school on Fifth Street and four rooms added, thus doubling space now to eight rooms. The cost was \$4,000 including furnace heat, later this hot air system was changed to a hot water plant.<sup>2</sup>

In 1913 the schools were so overcrowded that the high school and grades 7-8 were moved to the second story of the City Hall.

#### Sixth School

A combination grade and high school was built in 1917 which was used for school purposes until it burned in 1972. The location was between 5th and 6th, and Seward and Franklin, actually the same site Sheldon Jackson had originally chosen. This area is now the playfield for Capital School.

#### Seventh School

and gymnasium

In 1928 a school/was built on the land between 5th and 6th, and Franklin and Main Streets. This was used as a high school until remodeled and taken over by Capital Elementary School in 1958.

1. 2. Alaska Daily Dispatch 6/7/1902; 7/11/1903



### Miscellany

In 1902 free texts were given the pupils of the Juneau Public Schools for the first time. General reference books were purchased for the library.

\* \* \* \* \*

An exhibit of school work was sent to the Pan American Exposition in 1902 where it was awarded a silver medal. A part of the exhibit was sent to the Crystal Palace Exhibition in London. Another part was sent to the St. Louis Exposition and here it won another medal. Unfortunately these interesting mementoes have been lost.

\* \* \* \* \*

In 1902 Montgomery Snow wrote the words for the song, "Alaska, My Alaska, and crimson and black were adopted as the school colors. The Seward Society was organized this same year and was first known as the Alpha Society, later taking the name "Seward." This was a literary club whose favorite study was debate. Such subjects as "Public Ownership of Public Utilities," were debated.

\* \* \* \* \*

In 1903-1904 the high school consisted of just three years, freshman, sophomore, and senior years being offered. The pupils graduated that year were Ethelyn Ebner and Grover C. Winn.

"I was never sure whether I was valedictorian or salutatorian" Grover used to say in his capacity as school board member at subsequent graduation exercises.



\* \* \* \* \*

A silver trophy cup was presented to the grade school by Crystal Snow (Jenne) for the first field meet ever held in Juneau (1904). The trophy is still in the possession of the high school.

\* \* \* \* \*

Thanksgiving 1904 saw the first football game played by Juneau High School.<sup>1</sup> A. M. Wright and Milton Winn coached the Juneau boys. The team consisted of the following:

Tom Cole, Center  
Ray James, Right Tackle  
Albert Rap, Right Guard  
Pete Reilly, Right End  
Royal Shephard, Left Guard  
George Kennedy, Left Tackle  
Marvie Hoff, Left End  
Park Frame, Quarterback  
Bob Cragg, Right Half  
Frank Bell, Left Half  
Ivar Langseth, Fullback  
Tom Hunter, Mascot

Douglas High School was defeated by a score of 6 to 0. Frank Bell made the touchdown, in the only game played that year.<sup>2</sup>

\* \* \* \* \*

Crystal Snow (Jenne) was the lone graduate of the class of 1905 of Juneau High School.

\* \* \* \* \*

1911-1912. Juneau High School's first band was started by a student, Kenneth Osborn, who had transferred here from another school where he had played in the band. After it was started the School Board hired a band leader, Professor Parish, to direct it. Parish not only directed but taught the students to play the various instruments. The band of 1911 was made up of the following students:

1 & 2. Alaska Daily Dispatch, 11/23/1904 and 11/25/1904



Band, continued:

Cornets: Trevor Davis, Harvey Fremming, Govey Shepard,  
Gunnar Gustafson  
Clarinets: Burdette Winn, Albert King  
Saxophone: Roland Winn  
Baritone: Kenneth Osborn  
Trombones: Chester Tripp, George Nelson, Charles Sabin  
Bass: Emanuel Sweeney, Cedric Davis  
Drums: Edward Sweeney, Lawrence

\* \* \* \* \*

1913-1914. Enoch Perkins, Teacher, organized a basketball team in this year. The first team consisted of Harland Herner, Simpson Mac-Kimmon, Russell Casey, Al Richards, Wilbur Burford, Cyril Kashevareff, Lawrence Hurlburt, Waino Hendrickson. The first game was won from Douglas High School 26 to 0. The only competition was Douglas and Juneau won five games out of the seven played that year.

Home Economics was started in Juneau High School in 1913. Miss Ina Priest (Lucas) was the teacher.

This same year saw the school library opened to the public.

The Juneau Band played at the dedication of the Alaska Hotel.

The JHS Student Council formed the following rules:

1. No student shall deface or mutilate school property in any way.
2. Students must not use vulgar language or be guilty of disorderly conduct. Ignorance of the rules is no excuse.

\* \* \* \* \*

In 1916 the <sup>Arctic</sup> Alaska Brotherhood erected a large hall on the present site of the Alaska Office Building in which there was a swimming pool.

"The tank is white tiled on the sides and a smooth finished cement floor. It is 80 x 30 feet and ranges from 18 inches to ten feet in depth. The water is heated."



Swimming pool, continued

High school and elementary pupils were given two days a week to use the pool "but at School Board expense."

The first time in the history of the Juneau Schools (1916) night classes were held for adults. Money for administration was solicited from business men and the enrollees also paid fees. The classes operated for five months, three nights a week.

Manual training classes in Juneau started for the first time. (1916)

\* \* \* \* \*

In 1917 the new school at Fifth Street between Seward and Franklin opened. It housed both elementary and high schools, including the overflow previously occupying the ~~the~~ second floor of the City Hall. This school building continued in use for school purposes until destroyed by fire in 1972. In the last few years of its existence it housed the Community College and several Alaska State offices.

\* \* \* \* \*

In 1928 the first high school building and gymnasium opened their doors on the block bounded by Seward and Main between 5th and 6th Streets. This was remodeled in 1958 and continues to be used as an elementary school (Capital).



Miscellany, Continued

The old Fifth Street Elementary School was built in 1917 at a cost of \$75,000.

\* \* \* \* \*

Juneau High Gun Club was started in 1932 with officers Bill Nikish, Duncan Robertson, and Boyd Marshall. Mr. A. A. Dunham was adviser.

\* \* \* \* \*

The first Southeast Alaska Music Festival was held in Ketchikan in April 1937. Ruth Coffin Allman was adviser and promoter.

\* \* \* \* \*

Juneau High School's first Alaska History course was taught in 1939 with Mr. A. S. Dunham as teacher.

\* \* \* \* \*

Ed Garnick was in Juneau Schools from the second grade until his graduation. He was valedictorian of his class. Elizabeth Madsen was salutatorian.

\* \* \* \* \*

In 1913-14 there was a split shift in the schools because of a large registration.

\* \* \* \* \*

In the days of the old one-story, two-room school, one teacher is recorded as teaching 84 pupils.

\* \* \* \* \*



Miscellany, Continued

8 \* \* \*

At a Rotary Club reception for teachers in the 1930's, Waino Hendrickson, a 1916 graduate of Juneau High School, reminisced of early days in the schools.

"Our band always played for funerals, of which there were many in the heyday of lode mining at Treadwell, Perseverance, Alaska Gastineau and Alaska Juneau. My favorite funeral march was 'Free as a Bird' and we played it all the way to the cemetery and back."

Waino stated that the major sources of school funds in those days was a \$1000 a year tax on every saloon, of which ~~there~~ <sup>there</sup> were seventeen.

"When prohibition came," he said, "There was a hue and cry that it would force the closing of the schools."

But it did not.

\* \* \* \* \*



### The Carter Code

Congress passed the Carter Code in 1900, which empowered Alaskan cities to elect boards of education which could organize and control their public schools. Education could now be supported by levied local taxes and was no longer dependent upon charitable institutions and churches. Juneau's first school board was H. F. Robinson,<sup>1</sup> W. W. Casey, and F. C. Hammond. See complete list of school board members from 1900 to 1945 elsewhere in this manuscript.

1. Alaska Daily Dispatch, 9/17/1900



# SCHOOL DIRECTORS

<u>Year</u>	<u>President</u>	<u>Secretary</u>	<u>Treasurer</u>	<u>Superintendent</u>
1900-01	H.F. Robinson	F.C. Hammond	W.W. Casey	
1901-02	"	"	"	
1902-03	H.R. Shepherd	"	"	
1903-04	"	"	*****	
1904-05	"	"	"	
1905-06	"	"	"	
1906-07	"	"	"	
1907-08	"	"	"	
1908-09	F.J. Wetrick	Chas. Goldstein	Henry States	
1909-10	"	n "	W.F. Gilmore	
1910-11	"	"	John Mitchell	
1911-12	"	H.J. Fisher	"	
1912-13	H.T. Tripp	"	W.E. Nowell	
1913-14	"	"	"	
1914-15	"	W.W. Casey	"	
1915-16	Grover C. Winn	"	"	L.D. Henderson
1916-17	"	"	G. McNaughton	A.M. Mathews
1917-18	"	"	"	Ethel J. Cragg
1918-19	"	"	"	"
1919-20	"	"	"	Edgar A. Stanton
1920-21	Dr. H. C. DeVigne	"	"	J.E. Lanz
1921-22	"	"	Grover C. Winn	"
1922-23	M.B. Summers	M.L. Merritt	"	"
1923-24	W.W. Casey	Grover C. Winn	M.L. Merritt	W.K. Keller
1924-25	R.E. Robertson	"	"	"
1925-26	"	"	"	"
1926-27	"	"	"	"
1927-28	"	"	"	"
1928-29	"	"	"	"
1929-30	"	"	"	"
1930-31	"	"	"	"
1931-32	"	"	"	R.S. Raven
1932-33	"	W.P. Scott	Grover C. Winn	"
1933-34	"	"	"	"
1934-35	"	"	"	A.B. Phillips
1935-36	"	"	"	"
1936-37	"	"	"	"
1937-38	"	"	"	"
1938-39	"	"	"	"
1939-40	"	"	"	"
1940-41	"	"	R.R. Hermann	"
1941-42	"	"	"	"
1942-43	"	"	"	"
1943-44	"	Ruth Popejoy	Dr. J.O. Rude	"
1944-45	"	"	"	"



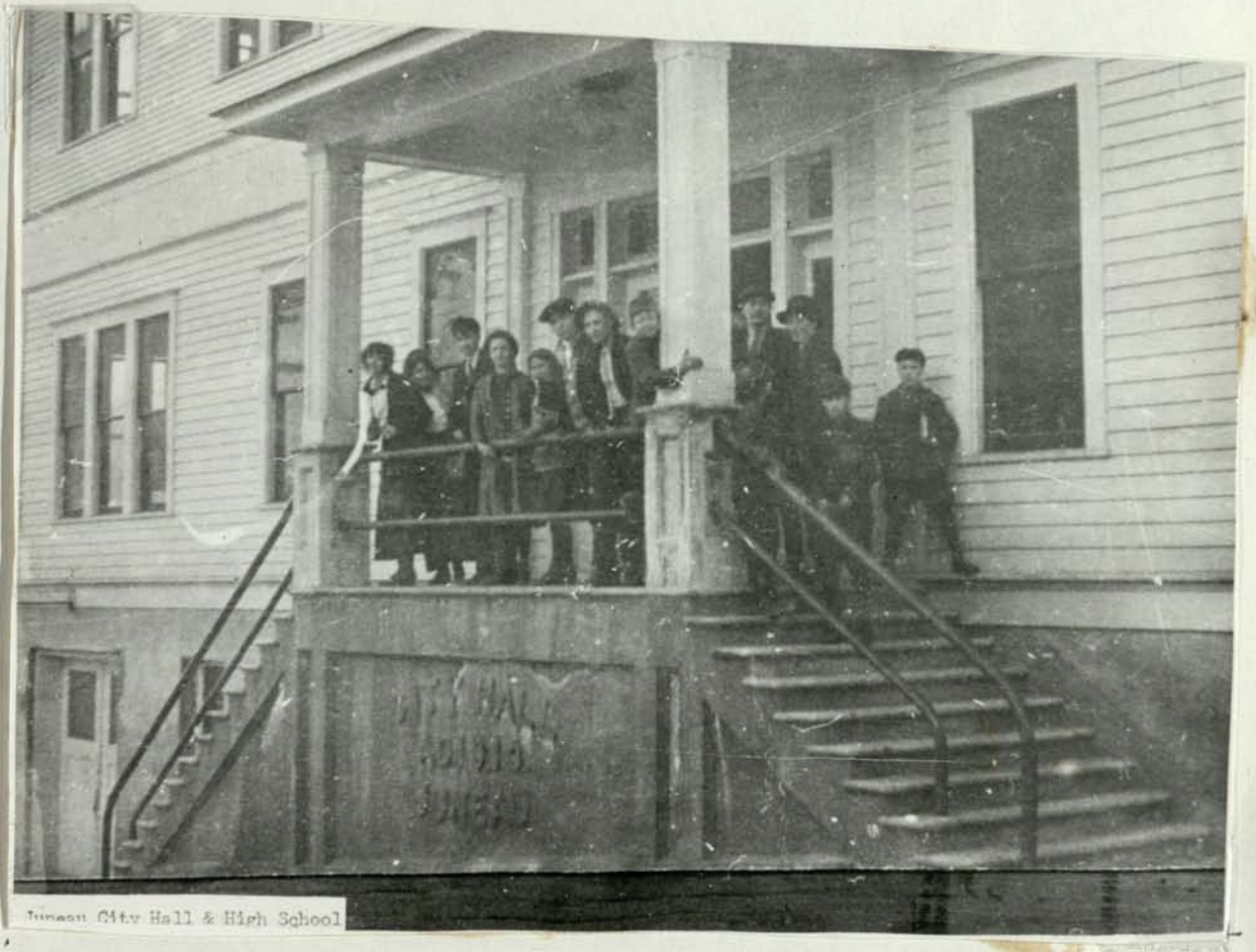


Photo copied by J. S. MacKinnon

The Class of 1916 on the steps of the City Hall. The picture was taken in 1914 after the whole high school moved from the Fifth Street School to make room for the growth of the elementary school.



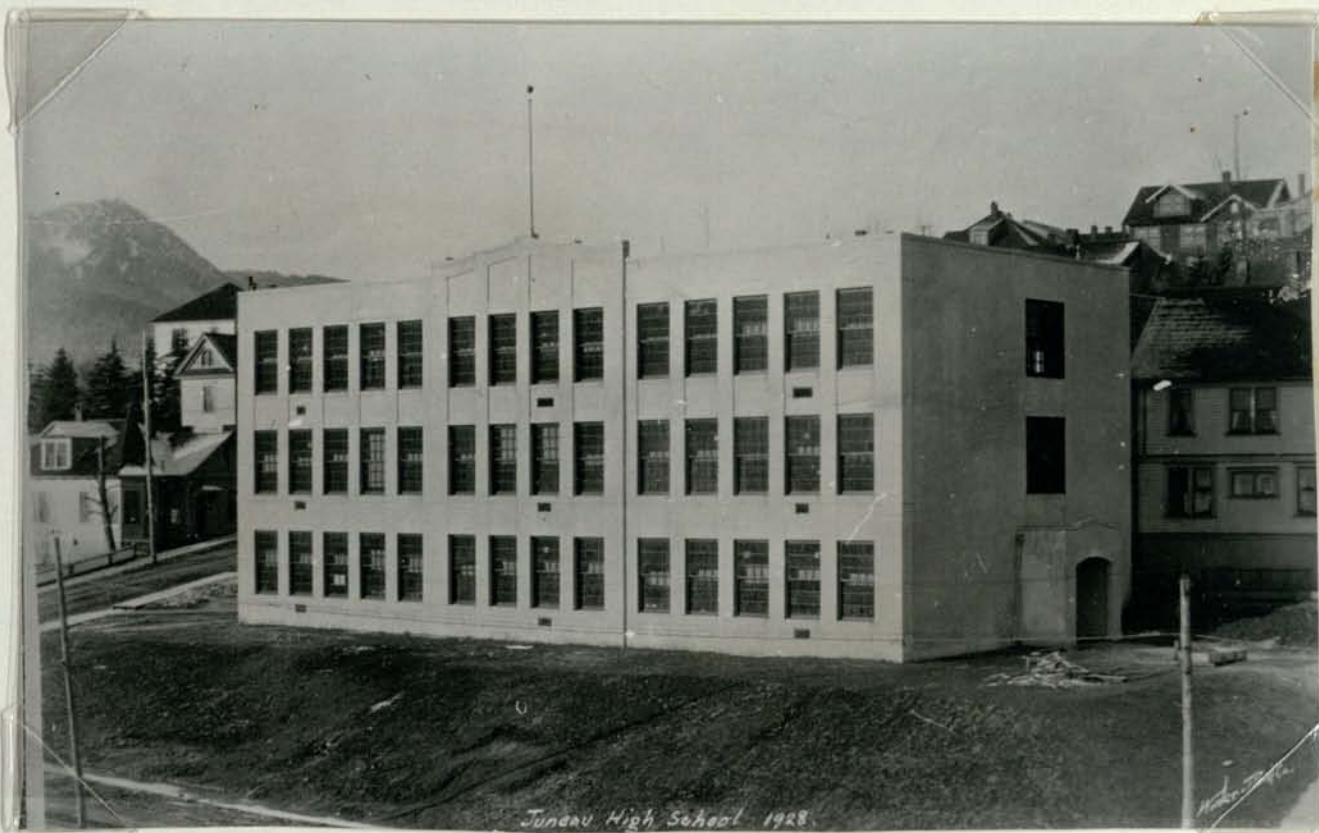


Photo copied by J. S. MacKinnon

#### CAPITAL ELEMENTARY SCHOOL

Juneau High School was housed in this building from 1928 to 1958. Speakers at its 1928 dedication were Governor George A. Parks and Mr. R. E. Robertson, President of the School Board.

At least four residences and one church had to be moved to free the land for the new school. The John Rustgard and Wallis George homes on Fifth Street were moved to Sixth and Seward and became the Frances and Davis Apartments respectively. Christian Scientistx purchased a native Presbyterian Church and transferred it diagonally across Fifth and Main to its present location. The houses of Cedric Davis and Mrs. Josephine MacPhetres on Sixth Street formerly stood on the Seward Street side of Capital School before being removed to their present locations.

Cost of the land was \$24,000 and the original building itself \$69,000.

In the early 1940's two classrooms were added on the Sixth Street side and around 1960 three more on Main Street.

The school coat of arms facing Fifth Street is the work of Miss Rosalind Hermes' Fifth Graders and was painted in 1971.





Photo copied by J. S. MacKinnon

#### Sixth School

A combination grade and high school was built in 1917 which was used for school purposes until it burned in 1972.

The location was still the one selected by Dr. Sheldon Jackson, between 5th and 6th, and Seward and Franklin Streets. This is now the playfield for Capital Elementary School.

#### Seventh School

In 1928 the High School moved into a new building on 5th Street between Seward and Main. This served as a high school until taken over by Capital Elementary School in 1958. The attached gymnasium is still in use.

In the picture, the new high school is the building on the left.





Photo J. S. McKinnon 1973

CAPITAL ELEMENTARY SCHOOL (the old high school) built in 1928 with additions in the 1940's and 1960's. The old Rustgard and George Residences which had to be moved when the school was

built may be seen on the right; the State Capitol is across the street; and the playfield on the site of the old Fifth Street School is in the right foreground.



CAPITAL SCHOOL is now painted an attractive yellow with a bright blue decor, and the interior has been renovated and modernized.

Detail of the coat of arms which was painted by Fifth Grade pupils in 1972.



FISH CREEK SCHOOL

*Given to HL  
1986*

Property was owned by the school board. School house was built by the residence, Ed Maki Sr, Art Nelson, Lawrence Swanson Sr, and sons Ollie Nelson, Axel Nelson and Charles (Maki) McLeod Sr.

The School was located 3/4 to a mile south of HUT POINT at the mouth of Fish Creek. Straight up from the Coast Guard Navigation Light 19.

Children of the following families who attended school there were:

Maki - Charles McLeod Sr (Maki) Violet Kudabeck ( McLeod Maki) Ed Maki

Nelson- Ollie and Axel Nelson

Swanson-Lawrence Swanson

Bukers- 5 children

Daroff- 6 children

Gatros- 4 children

Hovey Stoneman taught school throughout the 48 states and Mexico

James Ryan visited the school only once

School Board was advised of the loaction of the property in the 1950's, at this time the building was dismatled and moved by Ed Maki to his beach fron/property. Pictures of the school were donated to the Juneau-Douglas High School by Ed Maki.

Charles E. McLeod Sr.



FISH CREEK SCHOOL

*Given to HL  
1986*

Property was owned by the school board. School house was built by the residence, Ed Maki Sr, Art Nelson, Lawrence Swanson Sr, and sons Ollie Nelson, Axel Nelson and Charles (Maki) McLeod Sr.

The School was located 3/4 to a mile south of HUT POINT at the mouth of Fish Creek. Straight up from the Coast Guard Navigation Light 19.

Children of the following families who attended school there were:

Maki - Charles McLeod Sr (Maki) Violet Kudabeck ( McLeod Maki) Ed Maki

Nelson- Ollie and Axel Nelson

Swanson-Lawrence Swanson

Bukers- 5 children

Daroff- 6 children

Gatros- 4 children

Hovey Stoneman taught school throughout the 48 states and Mexico  
James Ryan visited the school only once

School Board was advised of the loaction of the property in the 1950's, at this time the building was dismatled and moved by Ed Maki to his beach front property. Pictures of the school were donated to the Juneau-Douglas High School by Ed Maki.

Charles E. McLeod Sr.



# THE SCHOOLS OF JUNEAU ALASKA



SUPT. A.B. PHILLIPS, FIRM BELIEVER IN WORLD PEACE, TEMPERANCE, AND MODERN TEACHING METHODS.



1030 STATUTE MILES NORTH WEST OF SEATTLE



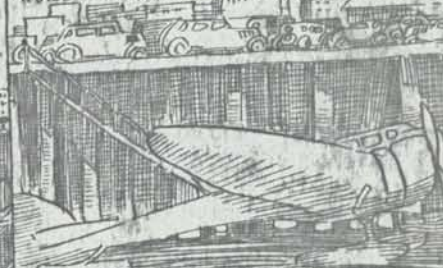
JUNEAU HAS A POPULATION OF OVER 5000, WITH AN ASSESSED VALUATION OF \$5,394,184<sup>00</sup> DOUGLAS



A SIX-STORY MILLION-DOLLAR GOVERNMENT BUILDING HAS RECENTLY BEEN ERECTED ACROSS THE STREET FROM THE PUBLIC SCHOOLS.



FIVE PLANES, 22 TAXI CABS, THREE STEAMSHIP COMPANIES.



AND THE LARGEST QUARTZ-GOLD MINE IN THE WORLD ARE DOING A

THE PRIVATE SCHOOLS THREE-TEACHER STAFF REGISTERS 75 PUPILS ANNUALLY, AND HAS A PER CAPITA COST OF \$58.



EQUIPPED WITH GYM, AUDITORIUM, LIBRARY, COMMERCIAL DEPT.

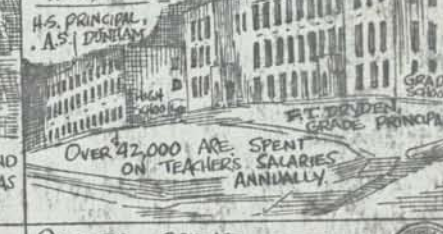
SISTER MARY AGNES, PRINCIPAL

THE GOVERNMENT SCHOOL REGISTERS AS MANY AS 80 CHILDREN, HAS A



PER CAPITA COST OF \$116, AND HIRES THREE TEACHERS. MRS. THOMAS ALLEN IS THE PRINCIPAL.

THE PUBLIC SCHOOLS ARE VALUED AT OVER \$220,000; COST \$62,000 A YEAR TO OPERATE; ACCOMMODATE OVER 750 CHILDREN WITH A 28-TEACHER STAFF. PER CAPITA COST, \$41.56, 1934-1935.



H.S. PRINCIPAL, A.S. DUNHAM

R.T. DODDEN, GRADE PRINCIPAL

OVER \$22,000 ARE SPENT ON TEACHERS' SALARIES ANNUALLY.

A THREE-YEAR NORMAL SCHOOL COURSE IS REQUIRED FOR ELEMENTARY TEACHERS. A COLLEGE DEGREE IS THE HIGH SCHOOL REQUIREMENT. TWO YEARS' EXPERIENCE IS ESSENTIAL.



SPACIOUS, WELL-LIGHTED ROOMS ARE HEATED BY THREE HUGE OIL-BURNERS.

ONE OF THE FINEST CHEMICAL LABORATORIES ON THE PACIFIC COAST IS LOCATED IN THE JUNEAU HIGH SCHOOL.



R.W. MARCUM, SCIENCE HEAD

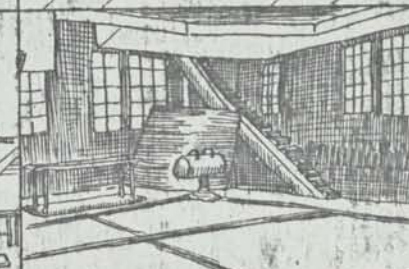
DOMESTIC SCIENCE



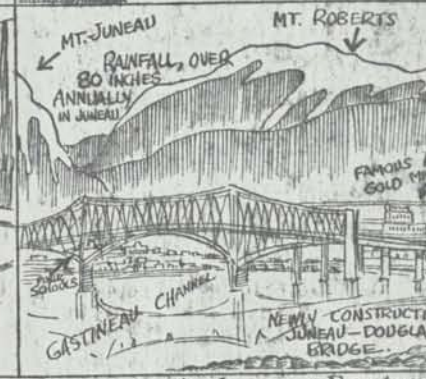
THE TIME IS ONE HOUR LATER IN JUNEAU THAN IN PORTLAND, ORE.

AND MANUAL TRAINING ARE TAUGHT.

CHILDREN COME FROM FINE HOMES. RENT IS HIGH, BUT FOOD AND CLOTHING ARE COMPARATIVELY REASONABLE.



ALASKA'S NEWEST, LARGEST AND BEST EQUIPPED GYM IS LOCATED IN JUNEAU.



MT. JUNEAU

MT. ROBERTS

RAINFALL, OVER 80 INCHES ANNUALLY IN JUNEAU

FAMOUS GOLD MINE

GASTINEAU CHANNEL

NEWLY CONSTRUCTED JUNEAU-DOUGLAS BRIDGE

This drawing was made by Kenneth R. Ferguson, instructor in the Juneau High School. Mr. Ferguson was graduated from the Oregon Normal School at Monmouth, Ore. After a year of teaching in Montana, he returned to Oregon and completed work at the Univer-

sity of Oregon for his B. A. degree. For two years he was principal of the Powell Butte School in Crook County, Oregon, where he made an enviable record. Last spring he was elected to his present position in the Juneau schools.



### Teachers in Juneau 1885-1945

The first school in Juneau, Alaska was begun in June 1885. Sheldon Jackson, Federal Agent for Education in the Territory, rented a log cabin for a classroom which was located on lot 1 block 8 as recorded in the book of deeds 1888, page 56. It was located at the corner of Third and Main Streets, a site until recently occupied by the Juneau (Zynda) Hotel.

The owner of the structure was George F. Nowell and it had to be renovated for school purposes having been used as a carpenter shop. Classes continued in the now famous "Little Log Cabin School" from June 1885 until January 1887, at which time it was sold to Reverend J. P. White who purchased it in trust for the Presbyterian church. Most photographs of the "Little Log Cabin Church" show it complete with a log belfry constructed at a later date.

Sheldon Jackson hired Miss Marion B. Murphy to teach the first school in Juneau. The following listing of names of teachers was taken from the Report on Education in Alaska to the Secretary of the Interior 1885-1899, by Sheldon Jackson, Volumes I and II.

<u>Year</u>	<u>Name</u>	<u>Remarks</u>
1885-1886	Marion B. Murphy	Started teaching June 1885
1886-1887	Marion B. Murphy F. F. White	Resigned October 1886 Started November 1, 1886
1887-1888	George B. Johnson Miss Henrietta Jensen	White pupils Native Pupils
1888-1889	George B. Johnson Miss Rhoda Lee Miss Alice R. Hill	White Pupils Taught 12 days White Pupils completed year Native pupils
1889-1990	Miss Rhoda Lee Miss Cassia Patton	White pupils Native pupils



1890-1891	Miss Rhoda Lee Mrs. Seth Tozer	White pupils Native Pupils
1891-1892	Mrs. Lily O. Reichling Mrs. W. S. Adams	White pupils Native Pupils
1892-1893	David Davies Mrs. M.A. Saxman	White pupils Native pupils
1893-1894	David Davies Miss Elizabeth Saxman	White pupils Native pupils
1894-1895	S. A. Keller Miss Elizabeth Saxman	White pupils Native pupils
1895-1896	S.A. Keller Miss Elizabeth Saxman	White pupils Native pupils
1896-1897	S. A. Keller Miss Elizabeth Saxman Miss Jessie M. Rose	White pupils Native pupils Substitute teacher 2 months
1897-1898	Lizzie M. Hart Mr. V. C. Gambell Miss Elizabeth Saxman	White pupils resigned January White pupils Native pupils
1898-1899	Charles C. Solter Miss Elizabeth Saxman	White pupils Native pupils
1899-1900	Charles C. Solter Miss Elizabeth Saxman	White pupils Native pupils

\* \* \* \* \*

Here ended the administration of the Federal Government so far as the City of Juneau Schools were concerned. The municipality was incorporated July 1, 1900 and Congress passed the "Carter Code" in the same year which empowered Alaskan cities to elect boards of education and which could organize and control their public schools, ~~which~~ could be supported by levied local taxes and were no longer dependent on charitable institutions and churches. The Federal Government continued to operate schools for the natives but they were a separate system.



1900-1901 <sup>1</sup>	Miss Bessie Collison Miss Clara T. Arnold Miss _____ Friendly Miss _____ Reynolds Miss Emma Serrenta <sup>2</sup> Yule Miss Marie Sharon	Principal Resigned at mid term Started at midterm Started Dec.1 in 6-7 grades
1901-1902 <sup>3</sup>	Miss Bessie Collison Miss _____ Robison Miss Minnie Heid Miss Emma S. Yule Miss Marie Sharon Miss _____ Reynolds	Principal Resigned midterm Started midterm
1902-1903 <sup>4</sup>	Miss Emma S. Yule Miss Harriett Trimmer Miss Julia Bills Miss Nettie Stewart Miss Minnie Heid Miss Marie Sharon <sup>5</sup> Miss Grace Vrooman Miss L. C. Baker	Principal Resigned midterm Started midterm Added late in year
1903-1904 <sup>6</sup>	Miss Emma S. Yule Miss Harriett Trimmer Miss L. C. Baker Miss Nettie Stewart Miss Mary Mullen Miss Grace Vrooman Miss Lois Stewart	Principal
1904-1905 <sup>7</sup>	Miss Emma S. Yule Mr. F. J. Wetrick Miss Harriett Trimmer Mr. Albert Malmer Miss Marie Sharon <sup>5</sup> Miss Grace Vrooman	Principal

1. Alaska Daily Dispatch 7/16/1900
2. op.cit. 9/17/1900
3. op.cit. 9/4/1901
4. op.cit. 9/29/1902; 9/1/1902
5. Later Mrs. Bishop and in 1928 m. James S. Wickersham
6. Alaska Daily Dispatch 9/14/1903
7. Daily Record Miner 9/12/1904



1905-1906 <sup>1</sup>	Miss Emma Yule Miss Harriett Trimmer Mr. F. J. Wetrick Miss Anna Redding Miss Marie Sharon Miss Grace Vrooman Miss Ethel Ebner	Principal     Substitute for Miss Vrooman
1906-1907 <sup>2</sup>	Miss Emma S. Yule Mr. F. J. Wetrick Miss Kathryn Case Miss Harriett Trimmer Miss Grace Vrooman Miss Marie Sharon Miss Anna Redding	Principal
1907-1908 <sup>3</sup>	Miss Emma Yule Mr. Horace Deming Miss Kathryn Case Miss Grace Vrooman Miss Mary Mullen Miss Frances Huntley Miss Marie Sharon	Principal
1908-1909 <sup>4</sup>	Miss Emma Yule Miss Kathryn Case Miss Sarah E. Kahan Mr. Horace Deming Miss Frances Huntley Miss Grace Vrooman Mr. A. B. Mather Miss Florence Dudley	Principal Resigned January 1909    Replaced Miss Case Jan. 1909
1909-1910 <sup>5</sup>	Mr. S. E. Latimer Mr. Allen A. Hall Miss Gail Baker Miss Frances Huntley Miss Katherine J. Cunningham Miss Grace Vrooman Miss Sarah Kahan Mr. A. B. Mather	Superintendent (resigned)      Replaced Supt. Latimer
1910-1911 <sup>6</sup>	Mr. A. B. Mather Allan A. Hall Miss Gail Baker Miss Frances Huntley Miss Katherine J. Cunningham Miss Grace Vrooman	Superintendent

1. Daily Record Miner 9/15/1905
2. Alaska Daily Dispatch 9/9/1906
3. Daily Record Miner 9/9/1907
4. 1909 Yearbook Totem
5. Alaska Daily Dispatch 9/7/1909
6. Op. Cit. 9/7/1909



1911-1912 <sup>1</sup>	Mr. T. E. Latimer Blake Miss Myrtle Parr Miss Massey Miss Cunningham Miss Doss Miss Gail Baker	Superintendent
1912-1913 <sup>2</sup>	Mr. W. F. Parish Miss Myrtle Parr Miss Gail Baker Miss Helen Wharton Miss Harriett Case Miss Francis Bragg Miss Ethel Taylor	Superintendent
1913-1914 <sup>3</sup>	Miss Myrtle S. Parr Miss Gail Baker Mr. R. C. Johnson Miss Therese Couture Miss Ethel Chambers Miss Harriett Case Miss Helen Wharton Miss Marie McGill	Superintendent
1914-1915 <sup>4</sup>	Mr. C. Green Miss Gertrude E. Mallette Miss Lorraine Andrews L. D. Henderson Miss Lavina Wilson Mr. Enock Perkins Mrs. Enock Perkins Miss Harriett Case Miss Lacy Miss Morgan Miss Ina Priest Miss Florence Getchell Miss Marie McGill Miss Therese Couture Mr. R. R. Bell	Superintendent  Resigned midterm Resigned midterm
1915-1916 <sup>5</sup>	L. D. Henderson Miss Margaret Scott Miss Lavina Willson Miss Lorraine Andrews Miss Gertrude E. Mallette Miss Doris McGill	Supt. and H.S. Principal

1. Alaska Daily Dispatch 9/17/1910
2. op. cit. 10/11/1911
3. op. cit. 9/7/1912
4. Alaska Daily Empire 9/9/1913
5. op. cit. 9/5/1914



1915-1916 continued Miss Therese Couture

Miss Blanche Dyer

Miss Crystal Snow

Howard D. Poor

Miss Harriett Case

Miss -\_\_ Poole

Miss Leano Bruce

Miss Florence Getchell

Mrs. M. K. Strubell

Resigned in September

Took Miss Poole's place

1916-1917 <sup>1</sup>

Mr. L. D. Henderson

Superintendent

Miss Edith Lans

Miss May Twitchell

Miss Margaret Scott

Miss Myrl Aiken

Miss Jane Brenneman

Mrs. Gertrude Hellenthall

Miss Mina Sowerby

Miss Lavina Willson

The year 1917-1918 started a new era in Alaskan School Records.

Teachers listed here are all found in the Annual Report of the

Commissioner of Education for Alaska under the date as indicated.

The records are also found in the annual reports of the Superintendent

of Juneau Public Schools to the Commissioner of Education and are

on file in the office Juneau Superintendent of Schools. All

references indicated here are for convenience in locating only.

1917-1918<sup>2</sup>

A. M. Matthews

Superintendent

Miss Fay Wenk

Miss Blanche Dyer

Miss Evelyn Sullivan

Miss Mamie Wheeler

Miss Harriett Case

Miss Ruth Sellen

Miss Dorothy Gilcrest

Miss Jane Brenneman

Miss Marie Nelson

Miss Margaret Scott

Miss Mary Dresser

Mrs. Gertrude Hellenthall

Mr. V. C. Genn

Mr. Jg Sumph

part-time music

1. 1. Alaska Daily Empire 9/7/1915

2. Annual Report Com. of Education 1917



1918-1919<sup>1</sup>

Mrs. Ethel J. Cragg  
Mr. F. F. Sparks  
Miss Essie M. Jones  
Miss Sadie R. Brown  
Mrs. M. C. Peter  
Miss Marie A. Nelson  
Miss Irene Pope  
Miss Blanche Dyer  
Miss Harriett Case  
Miss Daisy Sparks  
Miss Helen Kelso  
Miss Arne McLaughlin  
Miss Pearl Duncan  
Mr. George Beal  
Miss C. Corda  
Mrs. Walter J. Manahan  
Mr. J. Sumph

Superintendent

Part time music

1919-1920<sup>2</sup>

Edgar A. Stanton  
Mr. J. E. Lanz  
Mrs. J. E. Lanz  
Miss Marie Nelson  
Miss Irene Pope  
Miss Clara E. Breakey  
Miss Bertha Park  
Miss Jessie L. Ran  
Miss Lucille Sexton  
Miss Astrid Ulleland  
Miss Ruth L. Moss  
Miss Harriett Case  
Miss Helen Kelso  
Miss Ella Fecht  
Miss Esther J. Nixon  
Miss Ethel R. Nixon

Superintendent

M

1920-1921<sup>3</sup>

J. E. Lanz  
Mrs. J. E. Lanz  
Miss Marie Nelson  
Miss Bertha Park  
Miss Lucille Saxton  
Miss Astrid Ulleland  
Miss Blanche R. Mashin  
Miss Helen G. Smith  
Mr. A. B. Phillips  
Miss Ruth L. Moss  
Miss Mae Burke  
Miss Esther J. Nixon  
Miss Ethel R. Nixon  
Miss Luzelle Canfield  
Miss Faith Condit  
Mrs. Iva Tilden  
Miss Margaret Walsh  
Mr. J. Sumph

Superintendent

Started in midterm  
Resigned at midyear  
Part time music

1. Commissioner of Education's report 1918
2. " " " " 1919
3. " " " " 1920



1921-1922<sup>1</sup>

J. E. Lanz Superintendent  
 Mrs. J. E. Lanz  
 Mrs. Jessie Peter  
 Miss Alice Morrison  
 Miss Mabel T. Mayer  
 Miss Mary T. Carnahan  
 Miss Eloise Jackson  
 Mr. Howard G. Hughes  
 Miss Marie A. Nelson  
 Miss Eula Clark  
 Miss Virginia Goff  
 Miss Luzelle Canfield  
 Miss Connie Martin  
 Miss Violette M. Bourgette  
 Mrs. Iva Tilden  
 Miss Maye S. Henry

1922-1923<sup>2</sup>

Mr. J. E. Lanz Superintendent  
 Mrs. J. E. Lanz  
 Miss Katharine Connell  
 Mr. Howard Hughes  
 Mr. H. W. Meenach  
 Miss Alice Morrison  
 Miss Emma Ueland  
 Miss Alma P. Abrahamson  
 Mrs. Grace Bishop  
 Miss Violette Bourgette  
 Miss Mabel Gazzolo  
 Miss Maye S. Henry  
 Miss Hilda M. Kohl  
 Miss Alma Meachem  
 Mr. Loren C. Sheets  
 Mrs. Iva Tilden  
 Miss Mary K. Carnahan

1923-1924<sup>3</sup>

Mr. W. K. Keller Superintendent  
 Mrs. Grace Vrooman Bishop  
 Miss Inalde Fietsem  
 Miss Emma A. Kemp  
 Miss Alma Meacham  
 Miss Ruth R. Reuter  
 Mrs. Josephine Tupper  
 Mrs. Iva Tilden  
 Mr. Noel I. Baker  
 Miss Mary K. Carnahan  
 Miss Hallie Hart  
 Miss Elsie Luedtke  
 Mr. R. S. Rierson  
 Miss Emma Ueland

1. 1. Report of the Commissioner of Education 1921
2. " " " " " 1922
3. " " " " " 1923



1924-1925<sup>1</sup>

Mr. W. K. Keller	Superintendent
Miss Inalde Fietsem	
Miss Alice Wagner	
Mrs. Iva Tilden	
Miss Violette Bourgette	
Miss Alma Meacham	
Miss Ruth Jones	
Miss Mabel Freiburg	
Mrs. Josephine Tupper	
Miss Nellie Aspden	
Mrs. Grace Vrooman Bishop	
Mr. Noel T. Baker	
Mr. R. S. Riersen	
Miss Ida L. Myhre	
Miss Lois F. Cook	
Mrs. J. W. Wood	
Miss Emma Ueland	

1925-1926<sup>2</sup>

Mr. W. K. Keller	Superintendent
Miss Inalde Fietsem	
Mrs. Iva Tilden	
Miss Elsie Arn	
Miss Violette Bourgette	
Miss Alma Meacham	
Miss Dalma Hanson	
Miss Mildred Abrahamson	
Miss Frances Dandersand	
Mrs. Josephine Tupper	
Mrs. Grace Vrooman Bishop	
Mr. Noel I. Baker	
Mr. R. S. Riersen	
Mrs. J. W. Woods	
Miss Ida Myhre	
Miss Lois F. Cook	
Miss Helen Gray	

1926-1927<sup>3</sup>

Mr. W. K. Keller	Superintendent
Miss Louise Cates	
Mrs. Iva Tilden	
Miss Charlotte Milton	
Miss Violette Bourgette	
Miss Anne Rohwer	
Miss Dalma Hanson	
Miss Donie Taylor	
Miss Mildred Abrahamson	
Miss Anne M. Fletcher	
Miss Maude Kayton	
Mrs. Grace Vrooman Bishop	
Mr. Noel I. Baker	
Mr. R. S. Riersen	
Mr. J. W. Woods	
Miss Ida Myhre	
Miss Gladys Palz	
Miss Helen Gray	
Miss Eunice Zimmerman	
Miss Olga Miller	

- |    |   |      |
|----|---|------|
| 1. | Report of the Commissioner of Education | 1924 |
| 2. | " " "                                   | 1925 |
| 3. | " " "                                   | 1926 |



1927-1928<sup>1</sup>

Mr. W. K. Keller  
Miss Louise Cates  
Mrs. Iva Tilden  
Miss Mildred Abrahamson  
Miss Violette Bourgette  
Miss Anne Rohwer  
Miss Bunnie White  
Miss Dalma Hanson  
Miss Donie Taylor  
Miss Mary I. Kolasa  
Mrs. Josephine Tupper  
Mrs. Grace Vrooman Bishop  
Mr. Robert S. Raven  
Miss Helen E. Gray  
Miss Ardena Leer  
Miss Janice Lowe  
Miss Eunice Zimmerman  
Miss Grace Wilkes  
Mr. Harry E. Waid  
Mrs. J. W. Woods  
Miss Theodora Budwin

Superintendent

1928-1929<sup>2</sup>

Mr. W. K. Keller  
Miss Gertrude Sandberg  
Mrs. Iva Tilden  
Miss Mildred Abrahamson  
Miss Violette Bourgette  
Miss Anne Rohwer  
Miss Hedvig Samuelson  
Miss Dalma Hanson  
Miss Donie Taylor  
Miss Elma Olson  
Miss Theopa Lee  
Mrs. Josephine Tupper  
Miss Ruth Creveling  
Mr. Robert S. Raven  
Miss Ardena Leer  
Miss Janice Lowe  
Miss Dorothy Chisholm  
Mr. Harry E. Waid  
Miss Theodora Budwin  
Miss Gladys Buehler  
Miss Helen Gray  
Miss Dorothy Fisher

Superintendent

1929-1930<sup>3</sup>

Mr. W. K. Keller  
Miss Gertrude Sandberg  
Mrs. Iva Tilden  
Miss Violet Bourgette  
Miss Mildred Abrahamson  
Miss Donie Taylor  
Miss Hedvig Samuelson  
Miss Dalma Hanson  
Miss Golda Mason  
Miss Elma Olson  
Miss Etta Shaw

Superintendent

1. Report of the Commissioner of Education 1927
2. " " " 1928
3. " " " 1929



1929-1930 continued

Mrs. Josephine Tupper  
Miss Ruth Creveling  
Miss Helen E. Gray  
Miss Gladys Buehler  
Miss Dorothy Israel  
Mr. Alexander S. Dunham  
Miss Loretta O'Malley  
Miss Elanche Kelley  
Miss Enid Burns  
Miss Dorothy Fisher  
Miss Dorothy Chisholm  
Mr. Robert S. Raven

1930-1931<sup>1</sup>

Mr. W. K. Keller  
Miss Elanche J. Turner  
Mrs. Iva Tilden  
Miss Alice Erbe  
Miss Violet Bourgette  
Miss Donie Taylor  
Miss Mabel Monson  
Miss Dalma Hanson  
Miss Mildred Abrahamson  
Miss Helen Starr  
Miss Anne Easton  
Miss Elma Olson  
Mrs. Josephine Tupper  
Miss Etta Shaw  
Mr. Robert S. Raven  
Miss Margaret Yeakey  
Mr. Alexander S. Dunham  
Miss Dorothy Israel  
Miss Elanche M. Kelley  
Miss Enid Burns  
Miss Marjorie Tillotson  
Miss Helen Gray  
Miss Dorothy Fisher  
Miss Ana Negoescu

Superintendent

1931-1932<sup>2</sup>

Mr. Robert S. Raven  
Miss Elanche Turner  
Mrs. Iva Tilden  
Miss Alice Erbe  
Miss Violet Bourgette  
Miss Mabel Monson  
Miss Donie Taylor  
Miss Rubt Apland  
Miss Dalma Hanson  
Miss Mary Kolasa  
Miss Helen Starr  
Miss Anne Easton  
Miss Elma Olson  
Mrs. Josephine Tupper  
Miss Etta Shaw  
Miss Marjorie Tillotson  
Miss Enid Burns

Superintendent

1. Annual Report of the Commissioner of Education 1930  
2. " " " " 1931



Mr. Elmer G. Wentland  
 Miss Helen E. Gray  
 Miss Blanche M. Kelley  
 Miss Dorothy Israel  
 Miss Margaret Yeakey  
 Miss Pauline Reinhart  
 Miss Evelyn Seevers  
 Mr. Alexander S. Dunham

1932-1933<sup>1</sup>

Mr. Robert S. Raven  
 Miss Blanche Turner  
 Mrs. Iva Tilden  
 Miss Alice Erb  
 Miss Violet Bourgette  
 Miss Mabel Monson  
 Miss Donie Taylor  
 Miss Ruby Apland  
 Miss Dalma Hanson  
 Miss Mary Kolasa  
 Miss Helen Starr  
 Miss Ann Easton  
 Miss Elma Olson  
 Mrs. Josephine Tupper  
 Miss Mariette Shaw  
 Miss Marjorie Tillotson  
 Miss Enid Burns  
 Mr. Elmer Wentland  
 Miss Helen E. Gray  
 Miss Blanche M. Kelley  
 Mr. Everett Erickson  
 Miss Margaret Yeakey  
 Miss Pauline Reinhart  
 Miss Alice Palmer  
 Mr. Alexander S. Dunham

Superintendent

1933-1934<sup>2</sup>

Mr. Robert S. Raven  
 Mrs. Iva Tilden  
 Miss Dalma Hanson  
 Miss Violet Bourgette  
 Miss Mabel Monson  
 Miss Donie Taylor  
 Miss Ruby Apland  
 Miss Ann Rohwer  
 Miss Mary Kolasa  
 Miss Helen Starr  
 Miss Ann Easton  
 Miss Elma Olson  
 Mrs. Josephine Tupper  
 Mr. James Pelley  
 Miss Mariette Shaw  
 Miss Alice Palmer  
 Miss Pauline Reinhart  
 Miss Marjorie Tillotson  
 Miss Maurine Herbig  
 Mr. Harold E. Regele  
 Miss Helen E. Gray  
 Miss Kathryn Long  
 Mr. Everett Erickson  
 Miss Margaret Yeakey  
 Miss Etta Schwamm  
 Mr. Alexander S. Dunham

Superintendent



1934-1935<sup>1</sup>

Mr. A. B. Phillips  
Miss Cynthia Batson  
Mrs. Iva Tilden  
Miss Dalma Hanson  
Miss Velma Bloom  
Miss Mabel Monson  
Miss Donie Taylor  
Miss Ann Rohwer  
Miss Margaret McFadden  
Miss Mary Kolasa  
Mrs. Helen Webster  
Miss Ann Easton  
Miss Elma Olson  
Mr. Douglas Gray  
Mr. Eldridge Rector  
Miss Mariette Shaw  
Mr. Alexander S. Dunham  
Mr. Harold Regale  
Miss Kathyrine Long  
Miss Marjorie Tillotson  
Miss Etta Schwann  
Miss Mildred Logg  
Mr. Everett Erickson  
Miss Ruth Coffin  
Miss Helen Gray  
Miss Margaret Yeakey  
Miss Pauline Reinhart  
Mrs. E. E. Connor

Superintendent

1935-1936<sup>2</sup>

Mr. A. B. Phillips  
Miss Cynthia Batson  
Mrs. Iva Tilden  
Miss Dalma Hanson  
Miss Velma Bloom  
Miss Mabel Monson  
Miss Donie Taylor  
Miss Ann Rowher  
Miss Margaret McFadden  
Miss Mary Kolasa  
Miss Edith Alexander  
Mrs. Helen Webster  
Miss Elma Olson  
Mr. Walter Hautala  
Mr. Kenneth Ferguson  
Mr. Thomas F. Dryden  
Mr. Alexander S. Dunham  
Mr. Robert Marcus  
Miss Kathyrine Long  
Miss Marjorie Tillotson  
Miss Myrtle Moe  
Miss Esther Lunsetter  
Mr. Everett Erickson  
Miss Ruth Coffin  
Miss Helen Gray  
Mr. Henry Harmon  
Miss Margaret Yeakey  
Mr. Byron Miller  
Mrs. E. Connors  
Miss Lucy Sinclair  
Miss Harriett Cutler

Superintendent

Elementary Principal  
High School Principal

Exchange Tchr Newport News Va.  
" " " " "

Nurse  
Exchange  
Exchange



1  
1936-1937

Mr. A. B. Phillips	Superintendent
Miss Cynthia Batson	
Mrs. Iva Tilden	
Miss Dalma Hanson	
Miss Velma Bloom	
Miss Mabel Monson	
Miss Donie Tayler (on exchange)	
Miss Ann Rohwer	
Miss Margaret McFadden	
Mrs. Marion Edwards	
Mrs. Helen Webster	
Miss Helen Parrot	
Miss Elma Olson	
Miss Mary Kolasa	
Mr. Walter Hautala	
Mr. Kenneth Ferguson	
Mr. T. F. Dryden	Elementary Principal
Miss Clarabelle Snyder (exchange from Hawaii)	
Mr. Alexander S. Dunham	High School Principal
Miss Edna Harpole	
Miss Kathyrine Long	
Miss Marjorie Tillotson	
Miss Myrtle Moe	
Miss Pauline Monroe	
Mr. Everett Erickson	
Miss Ruth Coffin	
Miss Helen Gray	
Mr. Henry Harmon	
Miss Zora Brown	
Mr. Byron Miller	
Mrs. Carolyn Garster	School Nurse

2  
1937-1938

Mr. A. B. Phillips	Superintendent
Miss Cynthia Batson	
Mrs. Iva Tilden	
Miss Dalma Hanson	
Miss Velma Bloom	
Miss Mabel Monson	
Miss Donie Taylor	
Miss Mary Kolasa	
Miss Margaret Colwell	
Miss Margaret McFadden	
Mrs. Helen Webster	
Mrs. Marion Edwards	
Miss Alice Johnson	
Miss Elma Olson	
Miss Helen Parrott	
Mr. Walter Hautala	
Mr. Kenneth Ferguson	
Mr. T. F. Dryden	Elementary Principal
Mr. Alexander S. Dunham	High School Principal
Miss Zora Brown	
Miss Avis Erickson	
Mr. Henry Harmon	
Miss Edna Harpole	
Miss Kathyrine Long	
Miss Myrtle Moe	

continued

1. Report of the Commissioner of Education 1936
2. " " " 1937



1937-1938 Continued Miss Pauline Monroe  
Miss Marjorie Tillotson  
Miss Alice Palmer  
Mr. Robert White  
Miss Dorothy Whittaker  
Mrs. Carolyn Garster

Nurse

1  
1938-1939

Mr. A. B. Phillips  
Mrs. Iva Tilden  
Miss Cynthia Batson  
Miss Dalma Hanson  
Miss Harriett Tust  
Miss Mabel Monson  
Miss Velma Bloom  
Miss Margaret Abrahamson  
Miss Frances Wheeler  
Mrs. Marion Edwards  
Miss Margaret McFadden  
Miss Margaret Colwell  
Mrs. Helen Webster  
Miss Elma Olson  
Mrs. Alice M. Johnson  
Mr. Gerald McLaughlin  
Miss Helen Parrott  
Mr. Walter P. Hautala  
Mr. T. Floyd Dryden  
Mr. Alexander S. Dunham  
Miss Zora Brown  
Mr. Kenneth Ferguson  
Mr. Henry Harmon  
Miss Edna Harpele  
Miss Kathyrine Long  
Miss Myrtle Moe  
Miss Pauline Monroe  
Miss Marjorie Tillotson  
Miss Dorothy Whittaker  
Miss Alice Palmer  
Mr. Robert White  
Mrs. Mary Monagle

Superintendent

Elementary Principal  
High School Principal

2  
1939-1940

Mr. A. B. Phillips  
Miss Cynthia Batson  
Miss Dalma Hanson  
Mrs. Iva Tilden  
Miss Harriett Tust  
Miss Mabel Monson  
Miss Velma Bloom  
Miss Margaret Abrahamson  
Miss Frances Wheeler  
Miss Margaret McFadden  
Mrs. Marion Edwards  
Miss Margaret Colwell  
Miss Elma Olson  
Miss Helen Parrott  
Mr. Harold Roth

Nurse

Superintendent

Resigned 1/19/40  
Started 1/19/40

- continued next page  
1. Report of the Commissioner of Education 1938  
2. " " " 1939



1939-1940 continued

Mrs. Alice M. Johnson	
Mr. Walter P. Hautala	
Mr. Gerald McLaughlin	
Mr. T. Floyd Dryden	Elementary Principal
Mrs. Helen Webster	
Mr. Alexander S. Dunham	High School Principal
Mr. John Caswell	
Mr. Henry Harmon	
Mr. Theodore Hodwalker	
Miss Edna Harpole	
Miss Helen Harrell	
Miss Ruth McVay	
Miss Myrtle Moe	
Miss Pauline Monroe	
Miss Phyllis Poulin	
Miss Marjorie Tillotson	
Mrs. J. C. Neate	Half-time only
Mr. Robert White	
Mrs. Mary Monagle	School Nurse
Miss Merle Janice Schroeder	

1940-1941<sup>1</sup>

Mr. A. B. Phillips	Superintendent
Miss Margaret Abrahamson	
Miss Thelma Akridge	
Miss Gladys Barrowman	
Miss Velma Bloem	
Miss Margaret Colwell	
Mr. A. L. Dahl	
Mrs. Marion Edwards	Resigned 1/7/41
Miss Dalma Hanson	
Mrs. Alice M. Johnson	
Miss Margaret Maland	
Miss Margaret McFadden	
Mr. Gerald McLaughlin	
Miss Mabel Monson	
Miss Elma Olson	
Mrs. Iva Tilden	
Miss Jeane Vander Leest	
Mrs. Helen Webster	
Miss Irene Jones	Started 1/7/41
Mr. T. Floyd Dryden	Principal Elementary School
Mr. Alexander S. Dunham	Principal High School
Mr. Henry Harmon	
Miss Edna Harpole	
Miss Helen Harrell	
Miss Helen Hendricks	
Mr. Theodore Hodwalker	
Mr. Fred Lindenmeyer	
Miss Ruth McVay	
Miss Pauline Monroe	
Miss Phyllis Poulin	
Mr. Harold Roth	
Mrs. Mary Monagle	School Nurse
Miss Marjorie Tillotson	
Miss Merle Janice Schroeder	
Mr. Robert White	



1941-1942<sup>1</sup>

Mr. A. B. Phillips	Superintendent
Margaret Abrahamson	
Miss Thelma Akeridge	Resigned 1/19/42
Miss Velma Bloom	On exchange
Miss Esther Boyd	
Mr. A. L. Dahl	<del>Resigned</del> Resigned 2/19/42
Miss Janet Foster	
Miss Katherine Green	
Miss Dalma Hanson	
Mrs. Alice M. Johnson	
Miss Irene Jones	
Miss Elsie McManigle	
Miss Margaret Maland	
Miss Dorothy Mayer	Began 1/19/42
Miss Mabel Monson	
Miss Elma Olson	
Miss Allison Swanson	On Exchange from Newton, Mass.
Mrs. Elva Rice	
Mrs. Helen Webster	
Mr. J. G. Williams	
Mrs. Carmen Yates	
Mr. T. Floyd Dryden	Elementary Principal
Mr. Henry Harmon	
Miss Edna Harpole	
Miss Helen Hendricks	Resigned 1/19/42
Mr. Theodore Hodwalker	
Mr. Fred Lindenmeyer	
Miss Ruth McVay	Resigned 12/19/41
Miss Kathryn Mitchell	Secretary to the Supt.
Miss Pauline Monroe	On Exchange
Miss Phyllis Poulin	
Miss Geraldine Ringstad	
Mr. Harold Roth	
Miss Marjorie Tillotson	
Miss Dorothy Johnson	Began 12/30/41
Mrs. A. B. Phillips	Began 1/19/42
Miss Florence Gregory	Exchange
Miss Mary Monagle	School Nurse
Miss Merle Janice Schroeder	
Mr. Robert White	

NOTE: Four teachers resigned at midterm; ~~two~~ two were on exchange; there was no high school principal; Superintendent Phillips filled both positions.

1. Report of the Commissioner of Education 1941



1  
1942-1943

A. B. Phillips	Superintendent
Miss Margaret Abrahamson	
Mrs. Mr Georgia Arlowe	Began December 1942
Miss Esther Boyd	
Miss Velma Bloom	
Miss Dalma Hanson	
Mrs. Alice M. Johnson	
Miss Irene Jones	Resigned December 1942
Miss Margaret Maland	
Miss Elsie McManigle	
Miss Mabel Monson	
Miss Elma Olson	
Miss Allison Swanson	
Miss Jeane Vander Leest	
Mrs. Helen Webster	
Mr. Gerald Williams	Resigned October 1942
Mrs. Marion Williamson	Began October 1942
Mrs. Carmen Yates	
Mr. T. Floyd Dryden	Elementary Principal
Mr. Richard Byrnes	
Mrs. Amanda Cook	
Mr. Henry Harmon	
Miss Edna Harpole	
Miss Doris McEachran	Secretary to the Supt.
Mrs. Mary Monagle	School Nurse
Miss Evelyn Olson	
Mrs. Myrtle Phillips	
Mrs. Merle Janice Pitts	
Mr. Thomas Powers	Half-time coach
Mrs. Elva Rice	Resigned November 1942
Mr. Harold Roth	
Miss Leila Sturgis	
Miss Marjorie Tillotson	
Mr. A. M. Uggan	Music half time
Mr. Ralph Wright	Began November 1942

NOTE: Three midterm resignations this term.  
Superintendent Phillips again acted in capacity of  
both superintendent and high school principal.

2  
1943-1944

Mr. A. B. Phillips	Superintendent
Miss Esther Abell	Began 1/17/1944
Mrs. Georgia Arlowe	
Margaret Abrahamson Berlin	
Miss Velma Bloom	
Miss Frances Cooper	Resigned 1/15/1944
Mrs. Margaret McFadden Case	
Miss Patricia Goodell	Began 2/9/1944
Mrs. Elsie McManigle Haegle	Resigned 12/1/1943
Miss Dalma Hanson	
Miss Ruth Holbrook	

1. Report of the Commissioner of Education 1942
2. Report of the Commissioner of Education 1943



1943-1944 Continued

Mrs. Alice M. Johnson	
Miss Joan Johnson	
Miss Marion Lange	Began 12/1/1943
Mrs. Mary Monagle	School Nurse
Miss Mabel Monsen	
Mrs. Alberta Murphy	
Miss Elma Olson	
Mrs. Helen Webster	
Marion Edwards Williamson	
Mr. Ralph G. Wright	
Mrs. Chris Wyller	Resigned 2/9/1944
Mr. T. Floyd Dryden	Elementary Principal
Mr. C. L. Anderson	
Miss Ruth Brooks	
Mr. Richard Byrnes	
Miss Emily Dean	
Mr. A. N. Eide	
Miss Phyllis Grant	
Mr. Henry Harmon	
Miss Doris McEachran	Secretary to Superintendent
Miss Mary Virginia Morris	
Miss Evelyn Ohlson	
Mrs. Myrtle Mae Phillips	
Mrs. Merle Janice Schroeder Pitts	
Miss Marjorie Tilletson	

1944-1945<sup>1</sup>

Mr. A. B. Phillips	Superintendent
Mrs. Georgia Arlowe	
Miss Velma Bloom	
Mrs. Margaret Berlin	
Miss Ruth Brooks	
Mrs. Margaret Case	
Miss Patricia Goodell	
Miss Dalma Hanson	
Miss Ruth Holbrook	
Mrs. Alice M. Johnson	
Miss Marion Lange	
Mrs. Mary Monagle	Nurse
Miss Mabel Monsen	
Mrs. Alberta Murphy	
Miss Elma Olson	
Mrs. Mary Stewart	
Mrs. Helen Webster	
Mrs. Marion E. Williamson	
Mr. Ralph Wright	
Mr. T. Floyd Dryden	Elementary Principal

Continued:

1. Report of the Commissioner of Education 1944



1944-1945 Continued:

Mr. Henry Harmon	High School Principal
Mr. C. L. Anderson	
Miss Grace Berg	Secretary to Superintendent
Mr. Richard L. Byrnes	
Mrs. Amanda Cook	Half time
Miss Emily Dean	
Mr. A. N. Eide	
Miss Phyllis Grant	
Miss Mary Virginia Morris	
Miss Evelyn Ohlson	
Mr. G. E. Pancheau	
Mrs. Marle Janice Pitts	
Mrs. Myrtle Moe Phillips	
Miss Marjorie Tillotson	

1  
1945-1946

Mr. A. B. Phillips	Superintendent
Mrs. Georgia Arlowe	
Miss Ruth J. Cronkite	
Miss Katherine Elle	
Miss Kathryn Gray	
Miss Dalma Hanson	
Miss Betty Harvard	
Miss Rose Olive King	
Miss Marion Kniffen	
Miss Dorothy McLeod	
Miss Margaret Maland	
Mrs. Mary Monagle	School Nurse
Mrs. Alberta Murphy	
Miss Ethel Murphy	
Miss Elma Olson	
Mrs. Elva Rice	
Mrs. Helen Webster	
Mrs. Melvina Weidman	
Mrs. Marion Williamson	
Mr. Ralph G. Wright	
Mr. T. Floyd Dryden	Elementary Principal
Mr. Henry Harmon	High School Principal
Mr. C. L. Anderson	
Miss Mary E. Brooks	
Mr. Richard H. Byrnes	
Mrs. Amanda Cook	Half time
Miss Emily Dean	
Miss Phyllis Grant	
Mrs. Myrtle Phillips	
Miss Arline Walker	
Miss Helyn Hoskins	
Mr. A. N. Eide	
Miss Gertrude McSpedden	Secretary to Superintendent
Mr. J. N. Shofner	Began 3/25/46
Mrs. Winifred McDonnell	Resigned 3/27/46

1. Report of the Commissioner of Education 1945



Teachers in Juneau Schools 1885-1945

Because of the infrequent use to which this may be put, no alphabetization within groups was made. Since the names before 1917 were taken from newspaper files, accuracy is only as great as the press reporting. List goes only through 1945.

A

Arnold, Clara	1900
Andrews, Lorraine	1914, 1915
Aiken, Myrl	1916
Abrahamson, Alma P.	1922
Aspden, Nellie	1924
Arn, Elsie	1925
Abrahamson, Mildred	1925-1930, 1943
Apland, Ruby	1931-1933, 1946, 1947
Alexander, Edith	1935
Abrahamson, Margaret	1938-1944;
Akeridge, Thelma	1940-1941
Arlowe, Georgia	1942-1945
Anderson, C. L. (Barney)	1943-1945

B

Bills, Julie	1902
Baker, Miss L. C.	1902-1903
Baker, Gail	1909-1913
Blake, —	1911
Bragg, Francis	1912
Bell, R. R.	1914
Bruce, Leano	1915
Bramerman, Jane	1916-1917
Brown, Sadie R.	1918
Beal, George	1918
Breakey, Clara E.	1919
Burke, May	1919, 1920
Bourgette, Violet M.	1921-1933
Bishop, Grace (See Vrooman)	1922-1929
Baker, Noel I.	1923-1926
Bedwin, Theodora	1927, 1928
Beuhler, Gladys	1928, 1929
Burns, ENid	1929-1932
Batson, Cynthia	1934-1939
Bloom, Velma	1934-1944
Brown, Zora	1936-1938
Barrowman, Gladys	1940
Boyd, Esther	1941, 1942
Byrnes, Richard	1942-1945
Brooks, Ruth	1943-1944
Berg, Grace	1944
Brooks, Mary E.	1945, 1946
Bechtold, Freda	1946-1948
<del>Bar</del>	



## C

Collison, Bessie	1900, 1901
Case, Kathryn	1906-1908
Cunningham, Kathryn J.	1901-1911
Couture, Thelma	1913-1915
Chambers, Ethel	1913
Case, Harriett	1912-1919
Cragg, Mrs. Ethel J.	1918
Corda, Mrs. C.	1918
Candfield, Luyelle	1920, 1921
Condit, Faith	1920
Carnahan, Mary K.	<del>1922</del> 1921-1923
Clark, Eula	1921
Cannell, Katherine	1922
Cook, Lois F.	1924, 1925
Cates, Louise	1926, 1927
Creveling, Ruth V.	1928
Chishelm, Dorothy	1928, 1929
Coffin, Ruth	1934-1936
Connors, Mrs. E. E.	1934, 1935
Colwell, Miss Margaret	1937-1940
Caswell, John	1939
Cook, Mrs. Amanda	1942-1945
Cooper, Francis	1943
Cronkite, Ruth	1945

## D

Davies, Mrs. David	1892, 1893
Deming, Horace	1907, 1908
Dudley, Florence	1908
Doss, <u>      </u>	1911
Dyer, Blanche	1915, 1917, 1918
Dresser, Mary	1917
Duncan, Pearl	1918
Davis, Mrs. Grace H.	1923
Dandersand, Frances	1925
Dunham, Alexander S.	1929-1940
Dryden, T. Floyd	1935-1945
Dahl, A. L.	1940, 1941
Dean, Emily	1943-1945

## E

Ebner, Ethel	1905
Everding, Ruth V.	1929
Erbe, Alice	1930-1932
Easton, Ann	1930-1934
Erickson, Everett	1932-1936
Edwards, Marion	1936-1940
Erickson, Avis	1937
Eide, Albert N.	1943-1945
Elle, Katherine	1945
<del>Edwards, Katherine</del>	



## F

Friendly, Miss	1900
Fecht, Ella	1919
Fietsam, Inalda	1923-1925
Freburg, Mabel	1924
Fletcher, Anna M.	1926
Fisher, Dorothy	1928-1930
Ferguson, Kenneth	1935-1938
Foster, Janet	1940

## G

Gambell, V. C.	1897
Green, C.	1914
Getchell, Florence (Gastonguay)	1914, 1915
Gilchrist, Dorothy	1917
Gern, V. C.	1917
Goff, Virginia	1921
Gamiola, Mabel	1922
Gray, Helen E.	1925-1936
Gray, Douglas	1934
Garster, Mrs. C.	1936, 1937
Greene, Katherine	1941
Grant, Phyllis	1943-1945
Goodell, Patricia	1944
Gray, Katherine	1945

## H

Hart, Lizzie M.	1897
Heid, Minnie	1901, 1902
Huntley, Frances	1907-1910
Hall, Allen	1909, 1910
Henderson, L. B.	1916
Hallenthall, Gertrude	1916, 1917
Hughes, Howard G.	1921, 1922
Henry, S. Maye	1921, 1922
Hart, Hallie	1923
Hanson, Dalma	1925-1945
Herbig, Maurine	1933
Hautala, Walter	1935-1939
Harmon, Henry	1935-1945
Harpole, Edna	1936-1942
Harrell, Helen	1939, 1940
Hedwalker, Theodore	1939-1941
Hendricks, Helen	1940, 1941
Holbrook, Ruth	1943, 1944
Harvard, Betty	1945
Heskins, Helyn	1945

## I

Israel, Dorothy	1929-1931
-----------------	-----------



## J

Johnson, George B.	1887, 1888
Johnson, R. B.	1913
Jones, Essie	1918
Jackson, Eloise	1921
Jones, Ruth	1924
Johnson, Mrs. Alice M.	1937-1944
Jones, Irene	1940-1942
Johnson, Dorothy	1941, 1942
Johnson, Joan	1943

## K

Keller, S. A.	1894-1896
Kahan, Sarah	1908, 1909
Kelso, Helen	1918, 1919
Kohl, Hilda M.	1922
Kemp, Erna M.	1923
Keller, W. K.	1923-1930
Kayton, Maude	1926
Kolasa, Mary	1927, 1931-1937
Kelley, Blanche	1929-1932
King, Rose Olive	1945
Kniffen, Marian	1945
Keppinger, Cordelia	1945

## L

Lee, Rhoda	1889-1890
<del>Latimer</del> Latimer, T. E.	1909, 1911
Lacy	1914
Lass, Edith	1916
Lanny, J. E.	1919-1922
Lanny, Muriel	1919-1922
Luedthe, Elsa E.	1923
Lee, Ardena	1927, 1928
Lowe, Janice	1927, 1928
Lee, Theopa	1928
Long, Kathyrine	1933-1938
Logg, Mildred	1934
Lundsetter, Esther	1935
Lindenmeyer, Fred	1940, 1941

## M

Murphy, Marian B.	1885, 1886
Mullen, Mary	1903, 1907
Malmer, Albert	1904
Mather, A. B.	1908-1910
Massey, —	1911

M Continued



M continued

McGill, Marie	1913-1915
Mallotte, Gertrude	1914-1915
Morgan, —	1914
McManigle, Elsie	1941, 1942
Matthews, A. M.	1917
McLaughlin, Anne	1918
Manahan, Mrs. W. J.	1918
Moss, Ruth L.	1919, 1920
Mashin, Blanch R.	1920
Morrison, Alice	1921, 1922
Meyer, Mabel J.	L(6L
Martin, Connie	1921
Meenach, H. W.	1922
Meacham, Alma	1922-1925
Myhre, Ida C.	1924-1926
Milton, Charlotte	1926
Miller, Olga	1926
Mason, Golda	1929
Monson, Mabel	1930-1944
McFadden, Margaret	1934-1940; 1943, 1944, 1947
Marcum, Robert	1935
Moe, Myrtle (Phillips)	1935-1939; 1941-1945
Miller, Byron	1935, 1936
Monroe, Pauline	1936-1941
McLaughlin, Gerald	1938-1940
Monagle, Mary	1938, 1939 ; 1940-1945
McVay, Ruth	1938-1941
<del>Maland, Margaret</del>	<del>1940-1942; 1945</del>
Maland, Margaret	1940-1942; 1945
Meyer, Dorothy	1941
Mitchell, Kathryn	1941
McEachran, Doris	1942, 1943
Murphy, Alberta	1943-1945
Morris, Mary Virginia	1943, 1944
McLeod, Dorothy	1945
Murphy, Ethel	1945
McSpedden, Gertrude	1945

N

Nelson	
Nixson, Marie	1917-1921
Nixon, Esther J.	1919, 1920
Nixon, Ethel R.	1919, 1920
Negoescu, Ana	1930
Neate, Mrs. J. C.	1939

O

Olson, Elma	1928-1945
O'Malley, Loretta	1929
Ohlson, Evelyn	1942-1944



Parr, Myrtle	1911-1913
Parish	1912
Perkins, Enoch	1914
Priest, Ina	1914
Reele,	1915
Peter, Mrs. M. C.	1918, 1921
Pope, Irene	1918, 1919
Parks, Daisy	1918
Park, Bertha	1919, 1920
Phillips, A. B.	1920, 1934-1945
Pelz, Gladys	1926
Palmer, Alice	1932, 1933; 1937, 1938
Pelley, James	1933
Parrott, Helen	1936-1939
Poulin, Phyllis	1939-1941
Pitts, Merle J. (See Schroeder)	1942
Powers, Thomas	1942
Pancheau, G. E.	1944

# Q

# R

Reichling, Miss Lily	1891
Reynolds, Miss	1900, 1901
Robinson, Miss	1901
Redding, Ann	1905, 1906
Ran, Jessie L.	1919
Reuter, Ruth R.	1923
Reirson, R. S.	1923-1926
Rohwer, Arne	1926-1928; 1933-1936
Raven, Robert S.	1927-1933
Reinhart, Pauline	1931-1934
Regele, Harold E.	1933, 1934
Rector, Eldridge	1934
Roth, Harold	1939-1942
Rice, Elva	1941, 1945-1948
Ringstad, Geraldine	1941

# S

Solter, Charles G.	1898, 1899
Sharon, Marie	1901, 1902; 1904-1907
Stewart, Nettie	1902, 1903
Stewart, Lois	1903
Snow, Crystal (Jenne)	1915
Strubell, M. K.	1915
Sowerby, Mina	1916
Sullivan, Evelyn	1917

Continued next page



# S Continued

Seleen, Ruth	1917
Scott, Margaret	1915-1917
Sumph, J.	1917-1920
Sparks, F. F.	1918
Stanton, Edgar	1919
Saxton, Lucille M.	1919, 1920
Smith, Helen G.	1920
Sheets, Lora C.	1922
Samuelson, Hedvig	1928, 1929
Sandburg, Gertrude	1928, 1929
Shaw, Etta (Mariette)	1929-1934
Starr, Helen	1930-1933
Seevers, Evelyn	1931
Schwamm, Etta	1933-1934
Schroeder, Merle J. (See Pitts)	1939-1943
Swanspn, Allison	1942, 1947
Sturgis, Leila	1942
Stewart, Mrs. Mary	1944
Shofner, Joseph N.	1945
<del>Schunfarp, Helmer</del>	

# T

Trimmer, Harriett (Hess)	1902-1906
Taylor, Ethel	1912
Twitchell, May	1916
Tilden, Iva	1920-1940
Tupper, Josephine	1923-1926; 1927-1933
Taylor, Donie	1926-1937
Turner, Elanche	1930-1933
Tillotson, Marjorie	1930-1945
Tust, Harriett	1938, 1939

# U

Ulleland, Astrid E.	1919, 1920
Uggen, A. M.	1942

# V

Vrooman, Grace (See Bishop)	1902-1910
Veland, Emma	1922-1924
Vander Leest, Jeane	1940, 1942
Ventur, Alfred	1947
White, F. F.	1886
Wettrick, F. J.	1904-1906
Wharton, Helen	1912, 1913
Willson, Lavina	1914-1916

W Continued next page

47



# W continued

Wenk, Fay	1917
Wheeler, Mamie	1917
Walsh, Margaret	1920
Wagner, Alice	1924
Weeds, Mrs. J. W.	1924-1927
White, Bunnie	1927
Wilkes, Grace	1927
Wid, Harry E.	1927-1928
Wentland, Elmer J.	1931, 1932
Webster, Helen	1934-1945
Whyte, Alex	1935
White, Robert	1937-1941
Whittaker, Dorothy	1937-1938
Wheeler, Frances	1938, 1939
Williams, Gerald	1941, 1942
Wright, Ralph	1942-1945
Williamson, Marion (See Edwards)	1942-1945
Weidman, Melvina	1945
Walker, Arline	1945

X

Y

Yule, Miss Emma	1900-1908
Yeakey, Miss Margaret	1930-1935
Yates, Carmen	1942

Z

Zimmerman, Eunice	1926, 1927
-------------------	------------



Section 2

Early day outlying  
schools

Knutson School near air port

Perseverance School

Eagle River or Amalga School

Thane School

Included among those who furnished  
information:

Dolly Knutson Silva

Thelma Minnis Ladum

Grace Dotson Butts

Hazel Jaeger McKinnon





The first school "in the valley" was located not far from the airport, near the log house of the Housel family, in the vicinity of Totem Park.

School began in 1910 and continued for seven or eight years. The first pupils were: Amelia Knudson, Dolly Knudson, Herbert Knudson, Harry Knudson, George Knudson, Charles Skuse, George Skuse, Marie Pelton, Edward Pelton, William Peterson.

The first teacher was Miss Cass. Others included Ora Kuykendall, Crystal Snow (Jenne), Miss Campbell, and Mrs. Magill.

Eleven pupils were needed to have a school. At one time it was necessary to draft two four-year olds to make the quota; and again a childless teacher was let go and replaced by a California widow with three children.

The building had one room with the teacher having quarters upstairs. It was heated by a coal or wood stove and there was no plumbing.

Information furnished by Dolly Knudson (Silva)





Photo copied by J. S. MacKinnon

PERSEVERANCE SCHOOL and its youthful teacher, Thelma Ninnis (Ladum). This one-room school was operated in Gold Creek Canyon at least from 1916 through 1919 and possibly longer. During World War I the children had a Red Cross Chapter and learned to knit.

The following information was supplied by Mrs. Ladum:

"I taught from 1916 through 1918, Esther Oliver Hall was the teacher for the following year. There were 11 pupils. I lived with a family until my tent was finished.

"Most of the time in going home to Treadwell for the weekends I'd go up the tram to the opening of the mine, through the mine, down the shaft, out through the snow sheds in Sheep Creek Basin, down another tram to the ferry at Thane, and then home. A few times if I wanted to stay over Sunday evening, I'd catch the first ferry to Juneau, then walk up. It would be a run for the last mile to make it by 8:45 a.m."

(At the time of which Mrs. Ladum writes, a triangular ferry service operated from Douglas, to Juneau, to Thane.)





Photo copied by J. S. MacKinnon

The EAGLE RIVER or AMALGA SCHOOL. Information furnished by Mrs. Walter Butts (Grace Dotson).

Mrs. Butts is not sure but thinks the school operated from about 1918 until 1926. It was housed in a log structure on the hill to the left of the old road leading to the scout camp and far from the old turnaround. The Amalga mine was five or six miles inland and was serviced by ships putting in at Eagle River Landing. A horse drawn tram from the mine to the harbor passed near the present Methodist Camp. The pupils were children of homesteaders and miners. It was a seven-months school.

The teacher in the picture is Miss Cheek. Other teachers included Miss McKenna, Miss McMahon, Miss Peterson, Nadja Kashevaroff. The pupils were Dotsons, McKennas, Stewarts, Pilkeys, and Wallaces.





Photo copied by J. S. MacKinnon

#### THANE SCHOOL

Two-teacher school below the present road was in operation by 1913 and perhaps earlier. It closed in the early 1930's.

Ina Priest (Lucas), one of the early teachers lived in Juneau with her sister and brother-in-law and commuted on the ferry. Hazel Jaeger (MacKinnon) taught the primary grades in Thane after her graduation from Mills College in 1921. She lived in Juneau, caught the tri-city ferry at 7:00 a.m., and walked home after school over the old causeway. The upper grade teacher that year was Blanche Torgerson.

Among other teachers were Mrs. Gastonguay, wife of the mine superintendent, Mrs. Frank Lamb, and Mrs. George Bolyan.

In later years the pupils included Furuness, Sturrocks, Watkins, Larsens, Stanyers, Sparks, Berggrens, Monagles, Kiloys, Holts, Morgans, Beltz, Seys, Metz, Thumas, Hopkins, and Baggens.



Information furnished included

Evelyn Judson McLean

Department of Education Reports

Felix Gray



This section on Douglas schools, public, parochial, and government, is by no means complete and has only the bits and pieces of information which were available. It is hoped that at least parts of this will be of interest to local history buffs. Surprisingly the equipment of the Treadwell School, which existed for 15 years after the turn of the century, in the Gastineau Channel area was not to be equaled for fifty years thereafter.

Statistical parts are probably the work of Felix Gray, long-time clerk of the schools, and were included in the records sent to the Juneau-Douglas School District office in 1955 when the two systems merged.

Excerpts from an article, "History of Douglas," written by John Henson, and appearing in the September 1907 issue of the ALASKA-YUKON MAGAZINE.

Mr. Henson claims the following for Douglas:

- 2000 population
- a water system
- an electric system
- two miles of graded and planked streets
- a city hall
- a natatorium with both fresh and salt water
- skating rink
- auditorium and stage
- fire department
- seven churches (both Greek and Roman Catholic, Episcopalian, Congregational, Friends, Methodist, Swedish Lutheran)
- a weekly newspaper, the DOUGLAS ISLAND NEWS
- telephones
- hourly ferry service
- saw mill
- steam laundry
- dairy,
- fish packer
- barrel factory
- cigar factory
- cabinet maker
- bakery, three restaurants, department store, two groceries, two dry goods stores, six general stores, two hardware stores, ~~six general stores, two~~ two drug stores, two confectionaries, two jewelry stores
- and tri-weekly steamer service to Seattle with mail and passengers.

Also, no bonded indebtedness and a property tax of five mils.



Douglas and Treadwell Schools  
Largely from records of Felix Gray

Names and dates of Douglas schools:

Douglas Public 1887 until it merged with Juneau in 19<sup>54</sup>  
Society of Friends Mission 1886-1902  
Sisters of Saint Ann 1896-1920  
Government School for Indians 1889-1940  
Treadwell ~~1886~~ 1896-1917

In the spring of 1901 an election was held and Treadwell became an incorporated town, the second in Alaska, Juneau having taken the same step the preceding year. After incorporation Treadwell ran its own school. The city of Douglas incorporated in March 1902 and built a school building costing \$14,000.

Douglas Public Schools

Names of teachers and enrollments. Since this book is put together with a spiral plastic binding, the large gap between the years 1902 and 1919 can be inserted when the information becomes available.

1887	Nellie E. Fish	37
1888	Nellie E. Fish	44
1889	Mrs. W. S. Adams	50
1890	Mrs. W. S. Adams	24
1891	Mrs. W. S. Adams	25
1892	S. A. Keller	19
1893	S. A. Keller	30
1894	Elizabeth Saxman	42
1895	Lathan A. Jones Anna Hunnicutt	59
1896	Anna Hunnicutt	75
1897	Miss Katie Spiers	46



1898	Miss Katie Spiers	70
1899	Miss Katie Spiers Miss Gertrude Spiers (the upper floor of the Jensen Bldg. was used for half the pupils and for two years following)	100
1900	Miss Katie Spiers Miss Gertrude Spiers	95
1901	Victor L. Holt Miss Katie Spiers	90
1902	Victor L. Holt Miss Alice Henson Miss Eva Galloway (school opened in the new building)	102



Photo copied by J. S. MacKinnon

TREADWELL SCHOOL about 1915. Text contributed by Evelyn Judson McLean who is in the picture (large hair bow). The teacher at the left is Miss Chisteen. Treadwell School had the use of the Company swimming pool, bowling alley, and library, which were maintained for the employees. The superintendent of the mine had a big old fashioned house with verandas all around.

Statistical details of this school are in the section of material from the manuscript of Felix Gray.

From the ALASKA-YUKON MAGAZINE of September 1907

"All Treadwell mine employees were taxed \$1 per month to maintain a 56 x 206 foot structure which was built on piling out over the water. It cost \$20,000, had steam heat, electricity, a reading room with 150 leading papers and magazines of the day, and 12 foreign publications for those who did not read English. There was a dark room for photographers, ten bathrooms and two showers, and a Turkish bath, a bowling alley, library of 1500 volumes ('no trash'), a 500-seat auditorium, and monthly concerts by its 25-piece band. The pupils of Treadwell School had all the privileges of the Club."



also @ Douglas - 02 (P61-2692)



photo copied by J. S. MacKinnon

THE DOUGLAS SCHOOL which burned in 1926



1

Photo copied by J. S. MacKinnon

DOUGLAS SCHOOL 1938 \$50,000



2

Photo J. S. MacKinnon

GASTINEAU SCHOOL 1957 \$563,000

Addition \$465,550



THE DOUGLAS PUBLIC SCHOOLS.

1902 - 1955

SUMMARY OF OPERATION & MAINTENANCE COSTS AND MISCELLANEOUS ITEMS:

Teachers No.	TERM	Months	Total Oper. Costs & Ave.	Funds from Douglas	Funds from Territory	No. Enrolled	H.S. Graduates
3	-1902-3-	7 - \$	3,174.47 -	\$ 31.12 -	\$3,174.47 -	- 102 -	-
3	-1903-4-	8 -	4,670.24 -	40.25 -	4,670.24 -	- 116 -	-
3	-1904-5-	8 -	4,778.03 -	41.90 -	4,778.03 -	- 114 -	-
4	-1905-6-	9 -	6,405.90 -	47.10 -	6,405.90 -	- 136 -	-
5	-1906-7-	9 -	6,473.30 -	39.72 -	6,473.30 -	- 163 -	-
5	-1907-8-	9 -	5,685.25 -	39.48 -	5,685.25 -	- 144 -	-
6	-1908-9-	9 -	5,081.90 -	40.01 -	5,081.90 -	- 127 -	-
6	-1909-10-	9 -	6,330.00 -	40.31 -	6,330.00 -	- 151 -	4
5	-1910-11-	9 -	6,193.90 -	46.56 -	6,193.90 -	- 133 -	-
6	-1911-12-	8 -	7,250.42 -	46.22 -	7,250.42 -	- 157 -	2
7	-1912-13-	9 -	8,508.40 -	51.56 -	8,508.40 -	- 165 -	2
7	-1913-14-	9 -	7,710.00 -	42.21 -	7,710.00 -	- 185 -	1
7	-1914-15-	9 -	10,250.84 -	52.84 -	10,250.84 -	- 194 -	-
9	-1915-16-	9 -	11,359.90 -	54.34 -	11,359.90 -	- 209 -	2
8	-1916-17-	9 -	12,335.60 -	48.37 -	11,965.60 -	\$ 370.00 - 255 -	5
9	-1917-18-	9 -	13,177.69 -	63.96 -	3,530.02 -	9,647.87 - 206 -	4
9	-1918-19-	9 -	12,121.88 -	80.26 -	3,030.48 -	9,091.40 - 151 -	6
9	-1919-20-	9 -	13,766.99 -	93.01 -	3,444.08 -	10,322.91 - 148 -	3
9	-1920-21-	9 -	15,823.19 -	87.90 -	4,145.41 -	11,677.78 - 180 -	4
9	-1921-22-	9 -	15,993.52 -	74.38 -	4,359.58 -	11,633.94 - 215 -	8
9	-1922-23-	9 -	17,399.04 -	93.54 -	5,109.70 -	12,289.34 - 186 -	5
9	-1923-24-	9 -	18,291.82 -	98.87 -	5,870.17 -	12,421.65 - 185 -	10
8	-1924-25-	9 -	16,479.54 -	105.64 -	4,840.64 -	11,638.90 - 156 -	2
9	-1925-26-	9 -	18,149.67 -	113.43 -	4,843.93 -	13,305.74 - 160 -	9
9	-1926-27-	9 -	18,011.21 -	124.22 -	5,382.25 -	12,628.86 - 145 -	8
9	-1927-28-	9 -	18,690.80 -	145.63 -	4,232.74 -	14,458.06 - 128 -	8
8	-1928-29-	9 -	16,932.00 -	128.27 -	2,834.00 -	14,098.00 - 132 -	6
8	-1929-30-	9 -	17,902.79 -	149.18 -	4,726.03 -	13,176.76 - 128 -	12
8	-1930-31-	9 -	16,477.00 -	139.63 -	4,160.44 -	12,316.56 - 118 -	6
8	-1931-32-	9 -	16,709.43 -	148.21 -	4,219.13 -	12,490.30 - 120 -	11
8	-1932-33-	9 -	17,642.31 -	150.76 -	4,410.57 -	13,231.74 - 122 -	11
8	-1933-34-	9 -	16,634.33 -	156.14 -	4,158.58 -	12,475.75 - 119 -	9
7	-1934-35-	9 -	15,161.94 -	166.50 -	3,332.93 -	11,828.11 - 105 -	7
8	-1935-36-	9 -	16,699.95 -	185.50 -	4,547.80 -	12,152.15 - 90 -	8
6	-1936-37-	9 -	15,868.80 -	180.32 -	3,787.64 -	12,081.16 - 88 -	9
6	-1937-38-	9 -	15,856.00 -	200.64 -	3,653.05 -	12,202.95 - 79 -	2
6	-1938-39-	9 -	15,763.68 -	202.11 -	3,031.23 -	12,732.45 - 78 -	3
6	-1939-40-	9 -	18,164.31 -	199.56 -	3,235.29 -	14,929.02 - 81 -	4
7	-1940-41-	9 -	16,423.86 -	179.77 -	4,406.59 -	12,017.27 - 108 -	5
7	-1941-42-	9 -	17,534.85 -	174.32 -	5,616.28 -	11,918.57 - 119 -	6
7	-1942-43-	9 -	15,131.19 -	187.70 -	3,277.29 -	11,853.90 - 103 -	1
8	-1943-44-	9 -	20,484.24 -	218.00 -	4,860.91 -	15,623.33 - 130 -	4
7	-1944-45-	9 -	21,718.42 -	230.14 -	4,830.97 -	16,887.45 - 104 -	6
7	-1945-46-	9 -	22,387.50 -	228.20 -	5,200.59 -	17,186.91 - 99 -	6
7	-1946-47-	9 -	27,298.84 -	282.66 -	4,667.59 -	22,631.25 - 111 -	3
7	-1947-48-	9 -	32,008.90 -	253.94 -	4,910.37 -	27,098.53 - 145 -	6
9	-1948-49-	9 -	47,287.41 -	352.73 -	12,644.71 -	34,642.70 - 162 -	5
9	-1949-50-	9 -	50,598.98 -	369.71 -	12,761.13 -	37,837.85 - 179 -	8
9	-1950-51-	9 -	51,335.00 -	345.24 -	13,514.65 -	37,820.45 - 179 -	5
11	-1951-52-	9 -	64,663.63 -	401.96 -	16,746.89 -	47,922.74 - 197 -	8
14	-1952-53-	9 -	79,674.30 -	362.07 -	21,615.80 -	56,406.48 - 277 -	8
						1,652.02 Transpntn.	
14	-1953-54-	9 -	107,904.51 -	401.07 -	30,609.51 -	74,388.00 - 359 -	8
						2,907.00 Transpntn.	
13	-1954-55-	9 -	107,341.03 -	393.98 -	28,777.99 -	75,887.90 - 354 -	8
						2,675.14 Transpntn.	

TOTALS: \$ 1,165,718.80 -

--- \$ 375,165.11 \$ 790,553.69 -

Ave.  
151.

258



1927

O. B. Olson, Superintendent  
Mrs. Lucille H. Edwards  
Martha Sey

There follow some miscellaneous listings of Douglas teachers, as obtained from the incomplete file of school directories in the Alaska State Historical Library.

1919

J. Arthur Young, Superintendent

1933

W. Arthur Steele, Superintendent  
Antoinette Rehmke  
Helen A. ~~Mankos~~ Mantz  
Catherine Petring  
Mabel A. Jackson  
Helmi Aalto  
Winifred Fairman  
Dorothy Holman

191922

Gordon C. Mitchell, Superintendent  
Lucille Harvey L. Rowley  
Katherine Sickels  
Helmi Aalto  
Impi Aalto  
Mrs. Nina M. Abbott  
Mrs. Dollie S. Donaldson  
Mary Middlekauff  
Grace Chapman

1935  
1923

C. H. ~~Olson~~, Superintendent  
F. K. Foster, Superintendent  
Hazel Miller  
Bernice Scoville  
Charles W. Trachsel  
Helmi Aalto  
Impi Aalto  
Mrs. Nina M. Abbott  
Verne Hannah  
Mrs. M. C. Holman

1936

1924

Bernice Scoville, Superintendent  
Charles W. Trachsel  
Hazel Miller  
Mrs. Nina M. Abbott  
Elva Kirkham

1937

Helmi Aalto, Superintendent  
Harriett Sey  
Impi Aalto

1925

Howard M. Burger  
George A. Shumway, Superintendent  
Dorothy Walker

1938

Otto Wagner  
Mrs. Orpha V. Shumway  
Alice M. Holt  
Zoa E. Holbrook  
Helmi Aalto  
Myrtle Nelson  
Impi Aalto



1927

O. E. Olson, Superintendent

Mrs. Lucille H. Edwards

Martha Sey

A. C. Nardin

Mary Helen Daily

Helmi A. Bach

Gladys Fleming

1928

Evelyn Manke, Superintendent

Floyd E. Hendrickson

Arthur Ladd

1929

C. H. Bowman, Superintendent

E. G. Wentland

Thelma Engstrom

Lucille Pepoon

1930

Margaret Pimperton, Superintendent

Edla Holbrook

Lee M. Thoma

Elizabeth Fraser

1931

C. H. Bowman, Superintendent

Lucile Margaret Pepoon

Elizabeth Karnes

1932

Martin R. Pederson, Superintendent

Margaret Pimperton

Grace E. Naghel

Lee M. Thoma

Elizabeth Fraser

1933

C. H. Bowman, Superintendent

Martin R. Pederson

1934

Lucille Pepoon, Superintendent

Elizabeth Karnes

Glofford Carter

Grace Naghel

Ruby I. Summers

Elizabeth Fraser

1935

Martin R. Pederson, Superintendent

Harriett M. Sweetland

Florence Ryan

Gifford Carter

Grace Naghel

Elizabeth Fraser

1936

Martin R. Pederson, Superintendent

Mrs. Elva Rice

Catherine Elliott

Howard M. Burger

Grace Naghel

Elizabeth Fraser

1937

Martin R. Pederson, Superintendent

Arthur Ladd

Frances Hess

Ernest Oberg

Grace Naghel

Elizabeth Fraser

1938

Martin R. Pederson, Superintendent

Arthur Ladd

Frances Hess

Ernest Oberg

Grace Naghel

Elizabeth Fraser

1940

Calvin E. Pool, Superintendent  
Eleanor E. Warren  
Arthur Ladd  
Ernst Oberg  
Esther E. Boyd  
Elizabeth Fraser

1941

Calvin E. Pool, Superintendent  
Eleanor Warren  
Arthur Ladd  
Ernest Oberg  
Ruby MacNeill  
Elizabeth Fraser

1943

Eleanor Warren, Superintendent  
Arthur C. Graber  
Jean M. Ackerson  
Mrs. Lee Whalen  
Ruby MacNeill  
Mrs. Kathleen Winkelmann  
Mrs. Ruby Cashen

1944

Eleanor Warren, Superintendent  
Charles L. Koelsche  
Mrs. Eunice Nevin  
Mrs. Lee Whalen  
Lillian Gentner  
Ruby MacNeill  
Mrs. Gertrude Selby

1945

William H. Seaman, Superintendent  
Zoana Neves  
Ella Wetherby  
Robert D. Wagner  
Mrs. Mary Peter  
Mrs. Helen Parrish  
Mrs. Eva Belle Benton





Photo copied by J. S. MacK innon

Douglas School Children in 1912





First School in Douglas 1886. Photo copied by W. H. Case and J. Simpson Mackinnon

SOCIETY OF FRIENDS MISSION SCHOOL FOR NATIVES operated in Douglas from 1886-1902 both as a day and boarding school. The school was removed to Kake in that year. Enrollments varied from 26 to 108 pupils.

Early teachers included Rev. Elwood W. Meisner, F. W. Baugham, Silas and Anna Moon, Rev. Charles Edwards, Dr. J. E. Connett, Rev. Charles and May Repogle.

Information from Ms. of Felix Gray



Society of Friends in Douglas  
St. Ann's Catholic School in Juneau  
St. Ann's Catholic School in Douglas  
Taku Village School  
Penafiel Mission  
Seventh Day Adventist School in Juneau

Information from various sources  
including:

Sister Mary Loyola, Archivist in Victoria B. C.  
Felix Gray  
Sister Mary Margaret Down



### Friends Society School

In the summer of 1886 the Friends Society of Kansas under the direction of Elwood W. Weisner and Francis W. Baughham, established a Mission Home and school for natives in Douglas. This home was built on Lot 2, Block 28 of the present townsite, and could accomodate 14 boarding pupils besides a like amount of day pupils. The first term was taught by Mr. Meisner.

The school continued for five more years, with the help of Silas and Anna Moon. In 1887 the Friends built a large church, which was used as a school as well as a meeting place, on Lot 2, Block 19, just across Bear Creek from the Home. The Mission and School were discontinued in 1902 and moved to Kake.



In an article written on the stationery of the Clerk of the Douglas School Board and included in the records at the transfer when the schools were merged, (Felix Gray ?) writes in September 1928 of the vicissitudes of maintaining school standards in the eleven years after the Treadwell cave-in disaster in 1917.

"The history of Douglas is interwoven with that of the Treadwell mines. The mines are flooded and shut down and Douglas is ~~now~~ <sup>now</sup> all that is left of the once great~~ing~~ mining camp, including a few who cling to their homes, and a swarm of youth loyal to the "old red schoolhouse." Through eleven long lean years these families have managed to live here and find work elsewhere, most of them crossing the Channel twice a day to and from Juneau.

"Our purpose is to give a short sketch of the school record from 1917, the year of the cave-in, to the present time (1928).

"As 1917 was also the year Territorial refunds of 75% for maintenance was begun, it will also cover the period of the support of the school under the present system.

"The total maintenance has been \$193,940.35 or an average of \$16,145.03 for these twelve years. Of this total Douglas has paid \$60,954.10, or an average of 5,079.50 per year, while the Territory has paid ~~\$60x~~ \$129,486.25, or an average of \$10,790.50.

"School enrollment in the twelve years has averaged 176, with 36 in the high school. Per capital cost has been \$101.61 per year.

"The 'Taku' High School Annual first appeared in 1917 and was issued seven out of the eleven years since then. The 'Gastineau Breeze' was the <sup>school</sup> first/newspaper published in Alaska. It also began in 1917, In <sup>1921-1922</sup> ~~1919-20~~ it was succeeded by a weekly 'The Douglas School News' but beginning again the following year it was published for the remainder of the life of the school and has won some national honors."



Douglas, Continued

Society of Friends Mission Schools

<u>Date</u>	<u>Teachers</u>	<u>Enrollment</u>
1886	Elwood W. Meisner F. W. Baugham	<del>65</del> x
1887	Elwood W. Meisner Silas Moon Anna Moon	65
1888	Reverend Charles Edwards Silas Moon Anna Moon	85
1889	Reverend Charles Edwards Silas Moon Anna Moon	92
1890	Reverend Charles Edwards Silas Moon Anna Moon	68
1891	Dr. J. E. Connett Silas Moon Anna Moon	54
1892	Dr. J. E. Connett Silas Moon Anna Moon	108
1893	Dr. J. E. Connett Charles Replogle May Replogle	87
1894	Reverend Charles Replogle May Replogle Miss F. J. Work	36
1895	Reverend Charles Replogle May Replogle	26

The Replogles were in charge of the Society of Friends Mission until 1902, and then moved their operation to Kake. During the last three terms Miss Jennie Lorenz taught and the Replogles had charge of the mission church.

Saint Ann's Parochial School (Douglas)

The following information was furnished by Sister Mary Loyola, Archivist, Sisters of Saint Ann in Victoria, B. C.

Saint Ann's Parochial School in Douglas was opened in September 1894. At first it was poorly housed in what was known as the "Bear's Nest," but in 1896 a two-classroom structure was built which was said to be as airy and well equipped as any in Alaska.

Sister May Frances and Sister Mary Febronie came each Monday from Juneau, crossing in the ferry, and returning to Juneau each week end.

In 1897 the Sisters of Saint Ann opened a hospital in Douglas to which a large wing was added in 1915.

The 1917 cave-in led to the closing of both hospital and school.

Saint Ann's in Douglas had schooled 1207 pupils before it ceased to exist in 1920.



St. Ann's Parochial School (Juneau)

Sources:

- (1) A book, A Century of Service, by Sister Mary Margaret Down, of which the Alaska State Historical Library has a copy.
- (2) Information provided by Sister Mary Loyola, Archivist with the Sisters of St. Ann in Victoria, B. C.

In 1886 three Sisters of Saint Ann left Victoria for Juneau on the S. S. Ancon to care for the sick and to teach in what was then a raw wilderness mining camp. They were:

Sister Mary Zenon Fontaine  
Sister Mary Bonsecours Greff  
Sister Mary Victor Dooly

The Ancon put in to Juneau after dark on September 9, 1886. Father John Althoff was at the wharf with a lighted lantern to escort the Sisters to their quarters at the foot of Mt. Roberts. Two parallel planks formed a sidewalk on the side of the rough muddy road. They saw no vehicles.

Next morning Sister Mary Victor looked out and cried, "Come and see. There are no chimneys on the houses."

True enough, only stovepipes protruded from the cabins and men wore rain proofs and rubber boots as it was too windy to use umbrellas.

On November 3, 1886 school opened with Sister Mary Zenon as teacher of four pupils, which number was increased to 22 by the end of the first year.

The Sisters occupied a small church until the downstairs of a 18' x 24' frame building was partitioned off for a ward for the sick. Two rooms upstairs became their quarters. The kitchen was a lean-to and served as laundry and dining room. The first patient was admitted on September 26, 1886.

The following November (1887) a new 40' x 40' hospital building was dedicated and the original structure converted into a school with a few resident pupils admitted.

Next year Sister Mary Peter Tougas taught classes in music and in both French and English. By the end of the fifth year a second teacher was needed. In 1896 the Sisters organized a boarding school and English, French, arithmetic, music and needlework were offered.

After 23 years the boarding section closed to make room for more hospital beds. Statistics of 1939 show that 1,227 pupils had attended St. Ann's for longer or shorter periods.

The high school section was discontinued in 1938 and the elementary school closed in May 19<sup>6</sup>~~2~~8.



*Juneau Saint Ann's Parochial School 1897*



Photo J. S. MacKinnon (copy)

ST. ANN'S PAROCHIAL SCHOOL (Juneau) 1897



Photo J. S. MacKinnon

1973

PAROCHIAL SCHOOL (Juneau)

Operated by the Sisters of Saint Ann almost continuously  
from the late 1880's until its closure in 1968.



Taku Village School  
(quoted from Felix Gray)

In 1879 the Reverend W. H. R. Corliss, A Presbyterian Missionary taught with his wife at Fort Wrangell, and in the summer of 1880 came up to the old Taku Village near the entrance to Taku Inlet and organized and taught a mission school there for the children of the natives.

In the summer of 1881, there being a lot of work and activity going on in the vicinity of Juneau, most of the natives moved from the old village to Juneau or the beach over on Douglas Island near Treadwell, and Reverend Corliss came with them and together with Reverend E. S. Willard from Haines, in the fall of 1881 established a mission school for the natives.

### PENIEL MISSION

Although no definite records of a school at Peniel Mission have been found it is said that this mission of the Nazarene Church carried on some academic activities in Juneau shortly after the turn of the century.

The mission was located north of the present Baranof Hotel and was under the direction of Reverend Mabel Holmes Cox.

In a recent visit to Alaska Mrs. Cox, a young 95 years of age, said that in 1898 Juneau was a town of 1600 and "looked as if it had been thrown together at the foot of the mountain and continued up the side. There were about 40 saloons, gambling houses, and houses of prostitution and we used to go through them once a week giving out tracts. I wasn't afraid of anything in those days."

The obituary of Mrs. Mary Brown Betts, who died in 1973 at age 81, mentions some schooling at Peniel Mission.



## JUNEAU SEVENTH-DAY ADVENTIST SCHOOL

Although this manuscript purports only to give information on Gastineau Charnel Area Schools from 1885 to 1945, the following information became available and hence is included.

<u>Year</u>	<u>Enrollment</u>	<u>Teacher</u>
1959-60	9	Francis Owens
1960-61	11	Francis Owens
1961-62	17	Ruth Schmidt
1962-63	15	Bettie Montgomery
1963-64	13	Bettie Montgomery
1964-65	13	Bettie Montgomery
1965-66	18	Kenneth Wilstrand
1966-67	27	Loren Dunston
1967-68	23	Loren Dunston
1968-69	22	Dan Dawson
1969-70	22	Brent Balmer
1970-71	13	Brent Balmer
1971-72	11	Brent Balmer
1972-73	11	Frederick Quaile



Various Schools in Juneau

Various Schools in Douglas

Sources of information

included:

Bob Martin

Bob DeArmond

Felix Gray

Reports of the Department  
of the Interior



### Indian Schools in Douglas

According to Dr. Dorothy DeBoer in a manuscript on file in the State Historical Library, Dr. Sheldon Jackson made a plea to churches in the States to send educational missions to Alaska. This resulted in the early day schooling of the native people being largely in the hands of the missions.

The Federal Government sometimes gave grants for salaries and other expenses to the missions. In 1885 the Presbyterians turned over their Southeast Alaska schools to the Government. These schools were already organized and had teachers familiar with the language and customs of the people. Native pupil attendance was usually about one in every six enrolled at that time and teachers were asking for school attendance regulations.

By 1887 all school expenditures were audited by a Territorial Board of Education, approved by the Commissioner of Education and transmitted to the Secretary of the Interior for submission to the Congress for appropriation.

The first school for Indians in Douglas was organized by the Society of Friends Church and was typical of Government assisted schools. The Friends took in both boarders and day pupils.

Douglas Indian Schools, cont.

The first Government school building was built in 1890 at a cost of \$900.

In 1902 another was constructed on the beach near the home of Chief Ana-Cla-Hash with John Kilbuck for a number of years the teacher there, followed by Mrs. Helen McAvoy.

Mrs. Rose Davis, wrote in her teacher's annual report to the Department of the Interior in 1928 "the school is an old machine shop, and not a suitable building. We just can't keep it clean." This school burned and in 1934 was replaced by a handsome white colonial green-shuttered structure which was in use until the school merged with the Juneau Government School in 1940.

Some miscellaneous information about the Douglas Government Schools follows. (Files of the Dept. of Interior in the Historical Library are not complete.)

<u>Date</u>	<u>Teachers</u>	<u>Enrollments</u>
1896	Miss K. T. Williams	32
1897	Miss Gertrude Spiers	25
1898	Miss Gertrude Spiers	28
1899	Mollie McA. Davis	37
1900	Mollie McA. Davis	37
1909	Mrs. Martha Hadley	8
1911	Esther Johnson Isabelle Thursby	20
<del>1912</del> 1912	Isabelle Thursby Edna Dean	11
1913	Walter Finch	13
1915	Everett Frohock	16

78



Indian Schools in Juneau 1883 (?) to 1947

September 1883 - first Indian school (not all sources agree on exact date)

1887 Government school pupils were in the same building but in separate classrooms from the public school students.

1891 Miss Alice Reichling had 15 pupils.

1894 Construction of a 60 x 30 frame building, "The Little White School," on the present site of the Governor's house among a forest of stumps of the newly cleared land. It cost \$1300 and was said to be "pleasant and comfortable." At that time Thlinget people flocked to the gold mines for employment and many of the newcomers did not know English. It was usual for beginning pupils without a knowledge of English to finish the chart the first year and be promoted to first grade the second. They excelled in art but found arithmetic difficult. It was not uncommon in Indian schools of that period for attendance averages to be less than 20% of enrollments, and the teachers pleaded for attendance laws.

1908 Miss Elizabeth K. Sanford was the teacher of the 67 pupils enrolled - the average daily attendance was 10.

1911 Miss Marie B. Slighon had an enrollment of 79 and an average daily attendance of 14, according to the report to the U. S. Department of the Interior.

1912 to 1927. From 1912 to 1927 little was available locally about the native schools between the time when the "Little White School House" was torn down to make way for the construction of the Governor's House, and 1927 when the handsome new three-room structure was built on Willoughby Avenue, next door to Thibodeau's Market, until Mr. Robert Martin came forth with the following information:

"In 1912 the Government School was moved to a site between the old Government Hospital and Gold Creek, with a 50-foot playfield between the school and creek. It was



a poor one-story structure with no inside lining either in walls or roof, had a coal-burning pot bellied stove for heat."

Mr. Martin further says, "In 1917 a snow slide of large proportion in Basin Creek Canyon backed up the water of Gold Creek into a great lake which broke loose and flooded the flats of the city. The Government School was completely turned around but no one was hurt. The building had to be put on new foundations, and it was at that time that a bell tower was added."

"Teachers included Tecla Jorgenson and Helen Burnhofer. Some of the pupils were Cecelia Kunz, Herbert Mercer, Ruth Dennis, Paul Rudolph, Albert Clark, Sr., and myself," Mr. Martin concluded.

Some more fragmentary bits of information are:

- 1915: Sadie Thompson, teacher with attendance 14 (regristration 34).  
1927: The Government School on Willoughby Avenue next Thibodeau's Market, was opened February 14, 1927. It cost \$10,000, had three teachers, and 45 pupils. Helen Burnhofer was principal. In those days the tides came up to the front door of the school, and it was not until 1934 that the Alaska-Juneau Gold Mine filled in the area between the school and the street <sup>with</sup> tailings, thus covering up four open sewers and providing a fine playfield for the children.  
1928: Mrs. Ella Smith joined the staff.  
1932 - enrollment 85; 1933 - 84; 1944 - 81; 1935 - 83; 1936 - 99;  
1937: - 99; 1937 - 90; 1938 - 126 (consolidated with Douglas Government School; 1939 - 168; 1940 - 183; 1941 - 230; 1944 - 177; 1945 - 141; 1946 0 128; 1947 - 106; Merged with Juneau Public;

After the merging of the two systems three fifth grade integrated classes occupied the Willoughby Avenue School Building. In 1955 it was reported out as surplus to the needs of the BIA, sold ~~and~~ and conveyed to the Juneau Independent School District and later to the Borough.



This building was the home of the Juneau Teenage Club for several years and was demolished in 1972 to make way for the new Native Arts Building.

Fish Creek

Tee Harbor

Minfield

Information from

Alaska Department of Education



FISH CREEK			Total Operating Expense
<u>Year</u>	<u>Enrollment</u>	<u>Name of Teacher</u>	
1937-38	6	- - - - -	\$ 691
1938-39	6	Arvo Wahto	1,197
1939-40	10	Mary Pinkley	1,938
1940-41	11	Hovey Stoneman	1,972
1941-42	12	Hovey Stoneman	2,021
1942-43	8	Hovey Stoneman	2,076

Fish Creek School was located at the mouth of Fish Creek on North Douglas, held in privately owned building, and was operated by the Territory as a special school for six years.

Dr. James C. Ryan, then Commissioner of Education, used to don high boots to wade across the channel from the airport at low tide to make supervisory calls.

Teacher Hovey Stoneman chose this remote spot because of a love of hunting, fishing, and the out of doors. He spent a number of summers in Mexico and earned a master's degree in Spanish from the University of Mexico.

# TEE HARBOR SCHOOL

Year	Enrollment	Teacher	Total Operating Expense
1939	8	Mrs. Bessie K. Rowe	\$2,101
1940	12	Mrs. Mary Pinkley	1,859
1941	17	Mrs. Mary Pinkley	2,171
1942	16	John E. Turner	2,491
1943	21	John E. Turner	2,826
1944	18	John E. Turner	5,255
1945	12	Homer Williams	3,173
1946	22	Helen Ayers	3,526
1947	12	Robert Easterday	3,607
1948	Incorporated into the Juneau Borough school District.		

Tee Harbor School opened in 1939 with Mrs. Bessie K. Rowe as teacher. The original building was on a barge which had been towed from Eagle River and one of Mrs. Rowe's problems was keeping pupils from falling into the water. Later the Territory built an attractive school house and teacherage.



# MINFIELD SCHOOL

<u>Date</u>	<u>Enrollment</u>	<u>Teachers</u>
1938	16	Mrs. Bessie K. Rowe
1939	16	Mrs. Gertrude Selby
1940	17	Mrs. Gertrude Selby
1941	15	Mrs. Gertrude Selby
1942	20	Mrs. Mary Pinkley
1943	34	Mrs. Gertrude Selby Mrs. Mary Pinkley
1944	27	Mrs. Mary Pinkley Mrs. Etolin Wittanen
1945	30	Mrs. Mary Pinkley
1946	36	Mrs. Mary Pinkley Mrs. Lee Mason
1947	34	Mrs. Mary Pinkley Paul Power
1948	37	Mrs. Mary Pinkley Thomas R. Marshall
1949	32	Mrs. Mary Pinkley Mary Louise Graves
1950	35	Mrs. Mary Pinkley Robert Easterday
1951	25	Helen D. Blair John Goins

The Territory maintained a school at Minfield Childrens' Home on Lena Beach from 1938 to 1952. Enrollments varied from 15 to 37 and for eight of those years two teachers were employed.

The operation ceased in 1952 when the structure was condemned.

Area-wide Recently  
Constructed Schools

Harborview School

Juneau-Douglas High School

Glacier Valley School

Gastineau School (see section Douglas Schools)

Marie Drake Schools (Junior High)

Auke Bay Elementary School

Floyd Dryden Junior High School

Augustus Brown Swimming Pool

Exterior

Interior

Sources of Information included:

City & Borough Fiscal Officer

Various Architects

Marie Darlin

Fred Eastaugh

Ruth Allman





Photo copied by J. S. MacKinnon

HARBORVIEW SCHOOL 1952



Photo J. S. Mackinnon

JUNEAU-DOUGLAS HIGH SCHOOL 1958 \$1,751,439

Addition: 1961 \$1,133,900





Photo J. S. MacKinnon

GLACIER VALLEY SCHOOL: 1963 \$1,026,000



Photo J. S. MacKinnon

MARIE DRAKE JUNIOR HIGH SCHOOL

Constructed in 1967 at a cost of \$1,900,00

Named for a long-time deputy Commissioner of Education  
and author of Alaska's official State song

An interesting feature of this structure is a planetarium  
(see dome in center of picture)





Photo J. S. MacKinnon

AUKE BAY ELEMENTARY SCHOOL

Constructed in 1968 at a cost of \$1,175,869

Stands on a hill overlooking Auke Bay and is notable  
for a use of bright colors

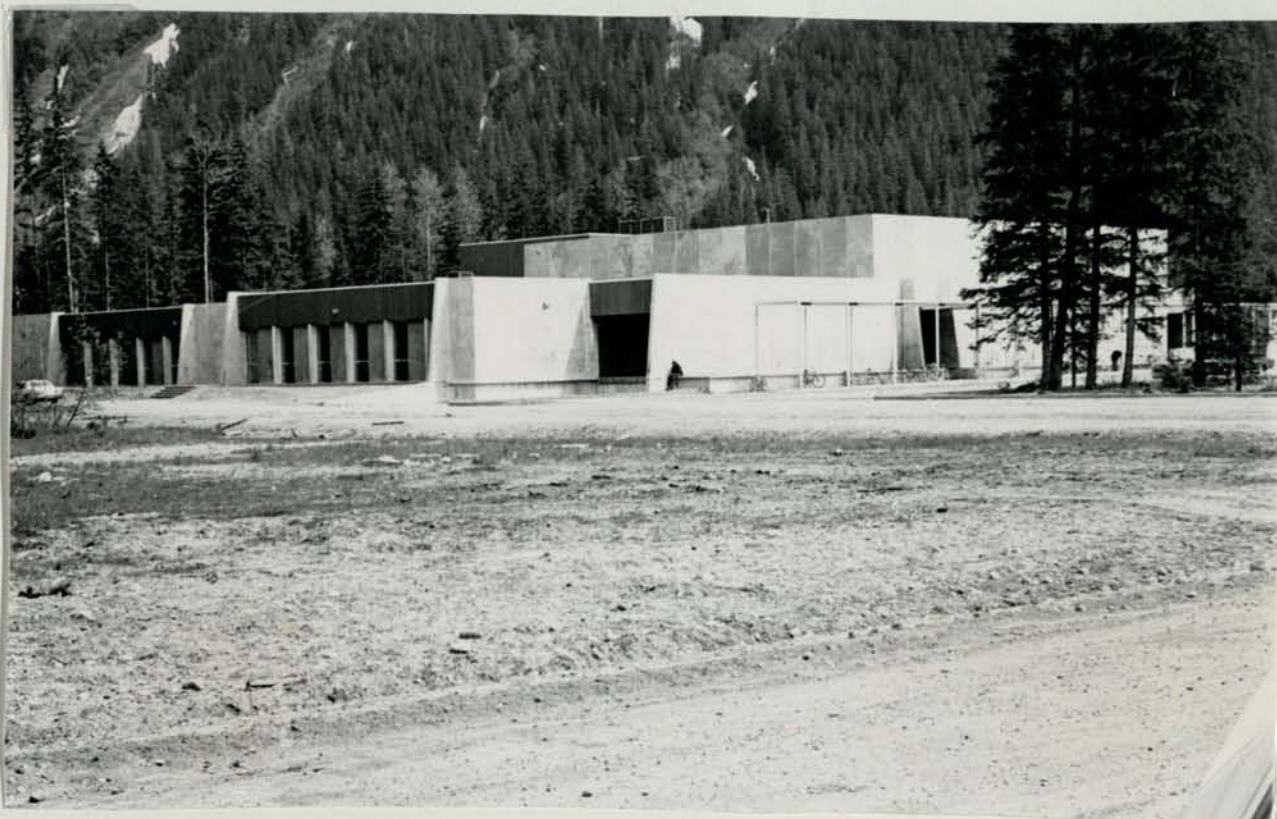


Photo J. S. MacKinnon 1973

FLOYD DRYDEN JUNIOR HIGH SCHOOL is situated in the Mendenhall Valley and was completed in 1973 at a cost of \$2,300,000.

Use of bright colors and Totemic design makes for a distinctive appearance of this modern school.

It is named for Thomas Floyd Dryden who was principal of FIFTH STREET ELEMENTARY SCHOOL from 1935 until 1955. Mr. Dryden resides with his wife Nancy in Peck, Idaho.





Photo J. S. MacKinnon 1973

#### AUGUSTUS BROWN SWIMMING POOL.

The Augustus Brown swimming pool completed in 1973, a part of the school complex on Glacier Avenue, is the fourth to be constructed in the Gastineau Channel area. The first was in the Treadwell Club in Douglas, the second in the AB Hall between the present Alaska Office Building and the site of the old Court House on the Hill, and the third a heated outdoor pool in Evergreen Bowl.

The pool cost \$1,150,534 of which \$450,000 was raised by an area-wide sales tax, which was in effect for three quarters. There remains enough in the fund for sidewalks and paving.

\* \* \* \* \*

Augustus George Brown was born in Ouvranches, France on March 13, 1864, the son of a Captain of the Queen's 7th Hussars, his family being on duty in France at the time of his birth. He was a younger son of a titled family and came to this area en route to the Klondike in the 1890's. He liked Juneau and made it his home, and so far as is known never did go to the Klondike.

next page



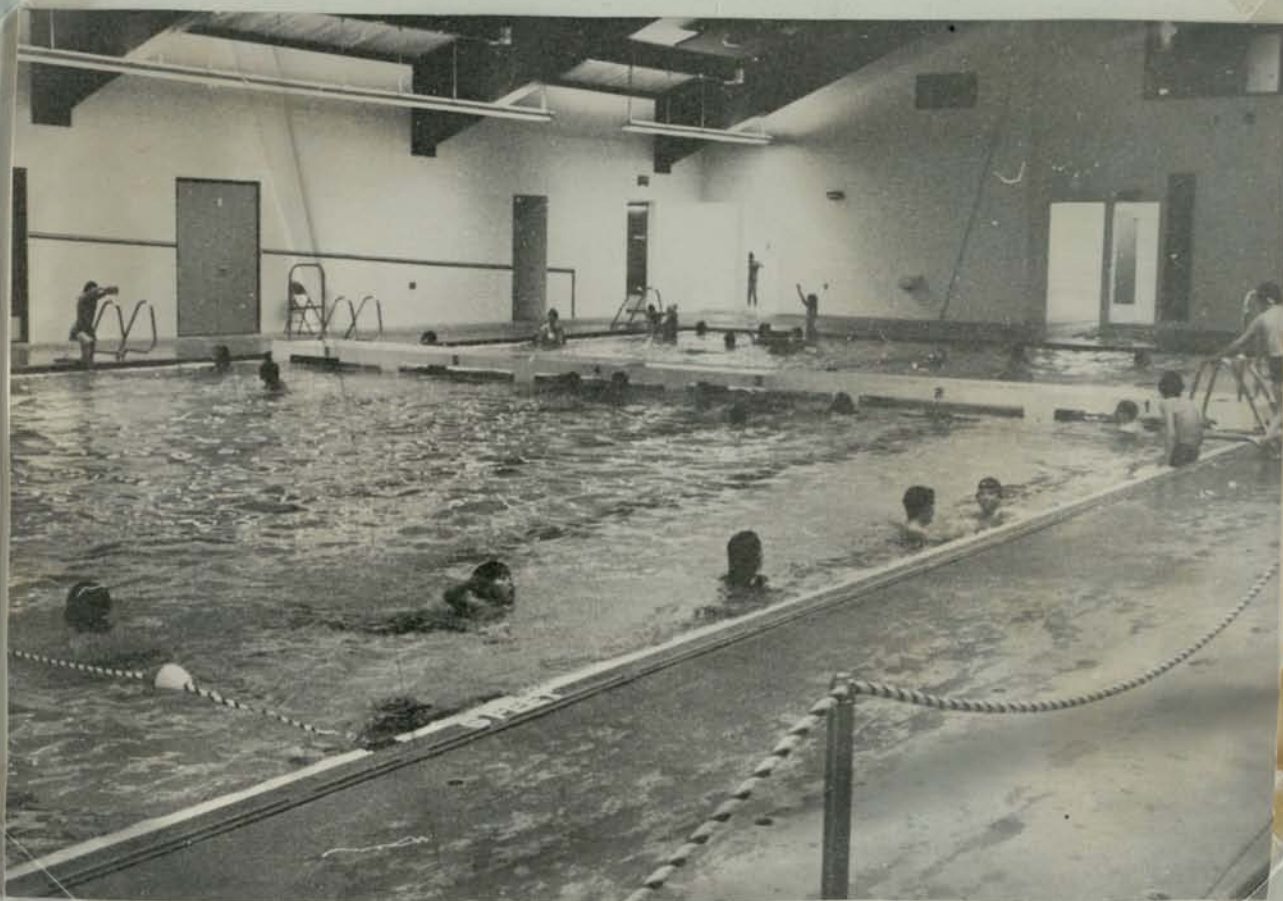


Photo J. S. McKinnon 1973

#### AUGUSTUS BROWN SWIMMING POOL, continued

He maintained a row of neat cottages on Willoughby and is presumed to have lived from his rentals and an allowance from an estate in England. He died in 1949, leaving \$5,000 to a sister in England and over \$30,000 to the City of Juneau for the purpose of constructing a swimming pool.

Augustus Brown had an abiding interest in music and was the possessor of a large collection of 78 records from which KINY used to borrow on occasion in the first years of its operation. He also lent them to the school.

The record collection was left to the city. Librarian Dale DeArmond says she has a listing of them and states the records were put in the City Hall for storage at the time of his death. A violin was found among his possessions.

In addition to his interest in music he was a fine ice figure skater. He is said to have affected windsor ties and to have dressed immaculately.



